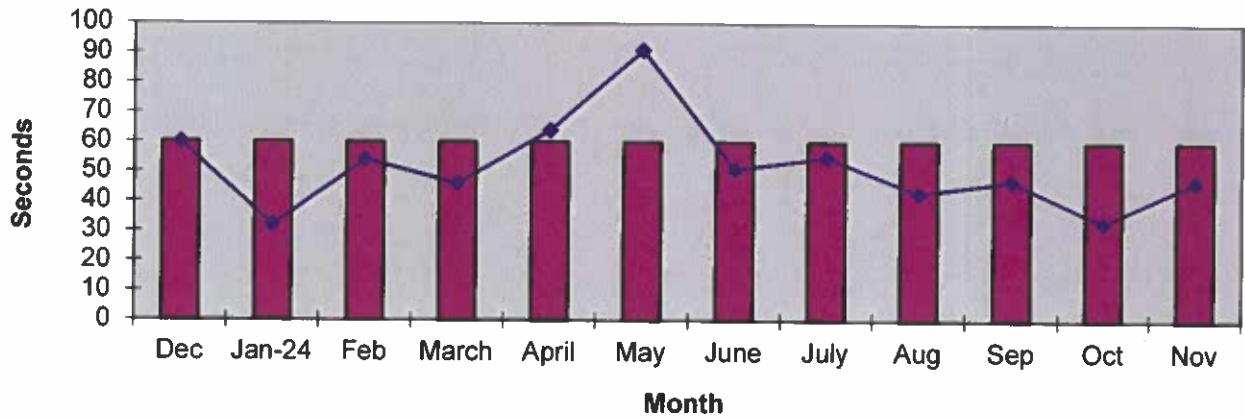
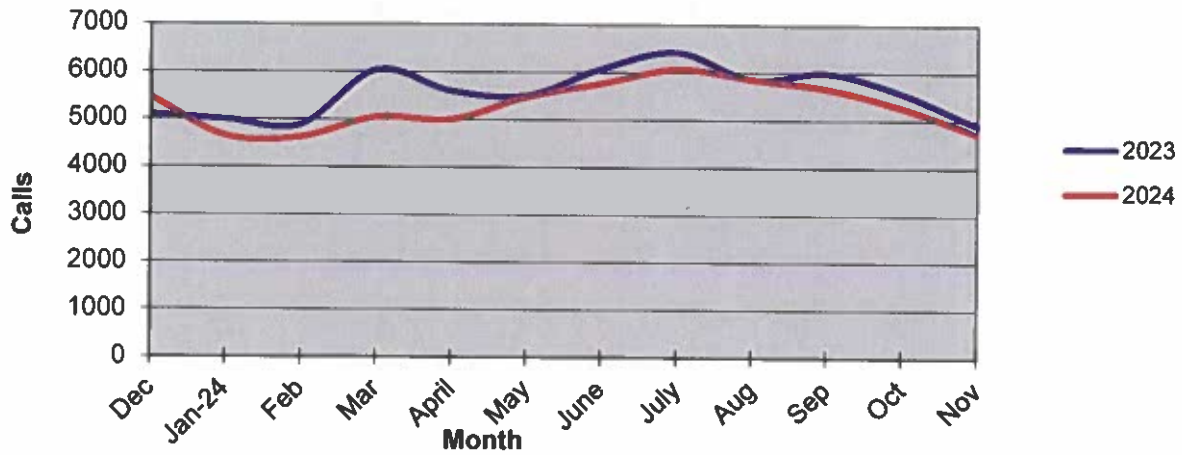


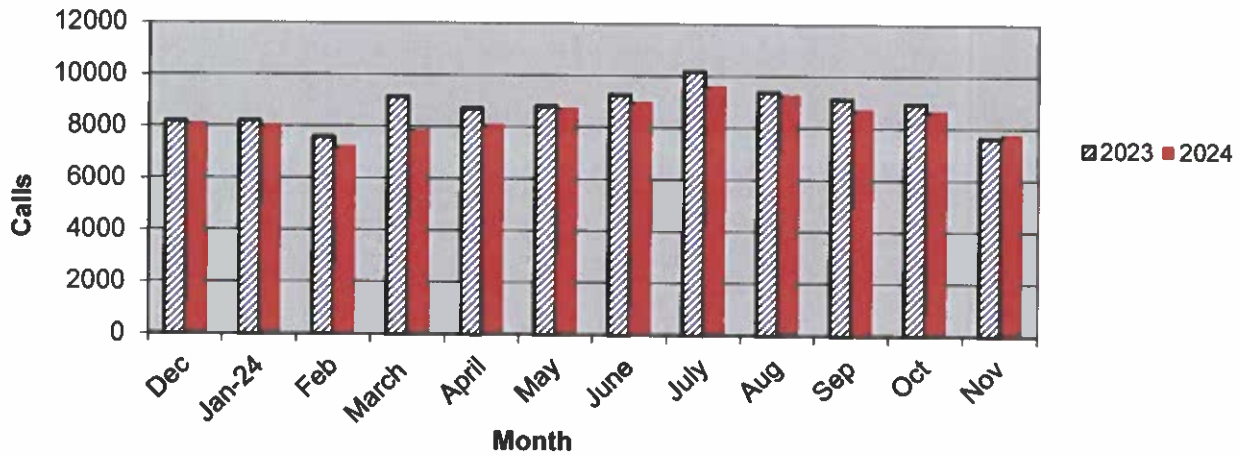
Priority 1 Dispatch Times- Police



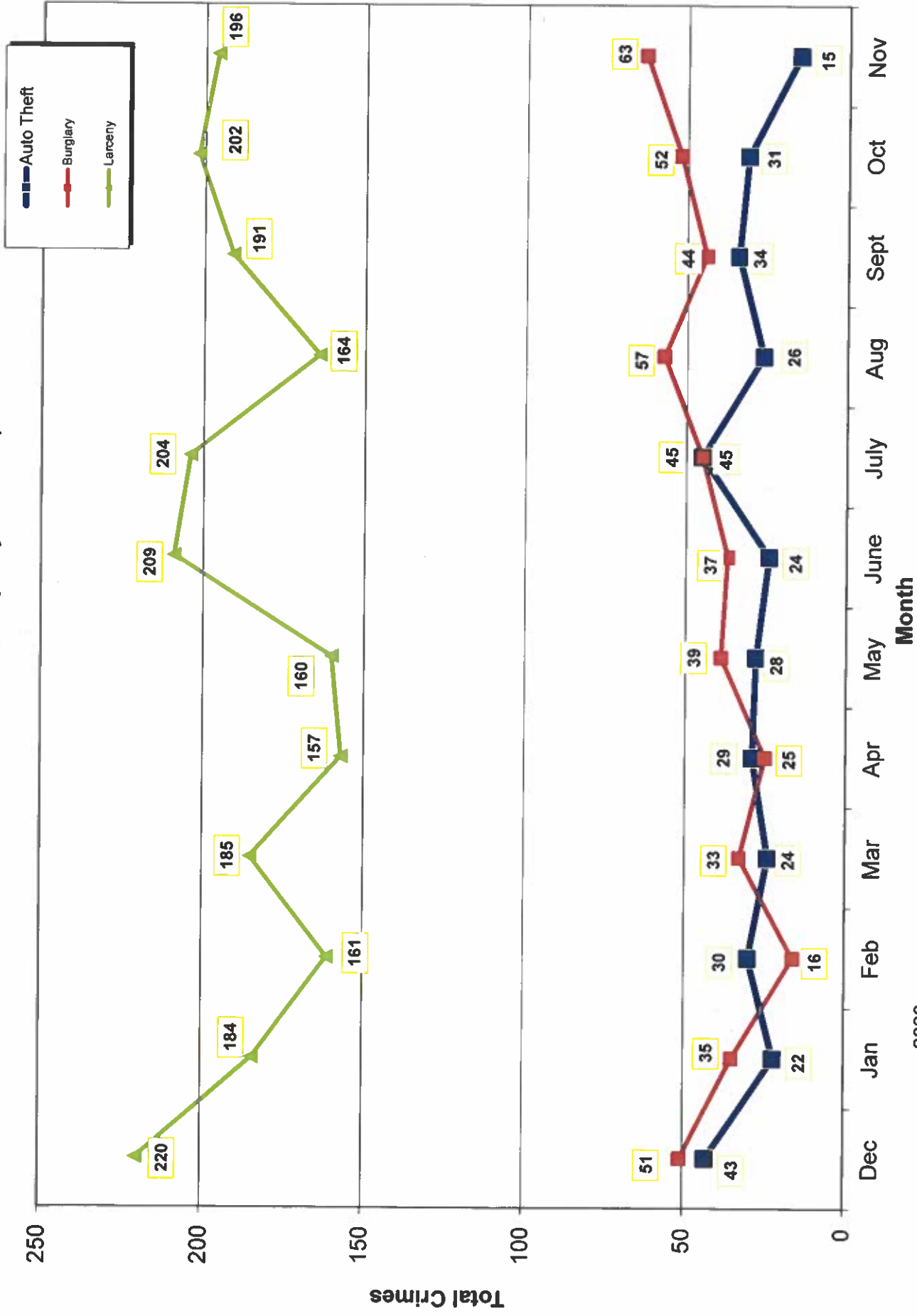
911 Calls



Calls for Service



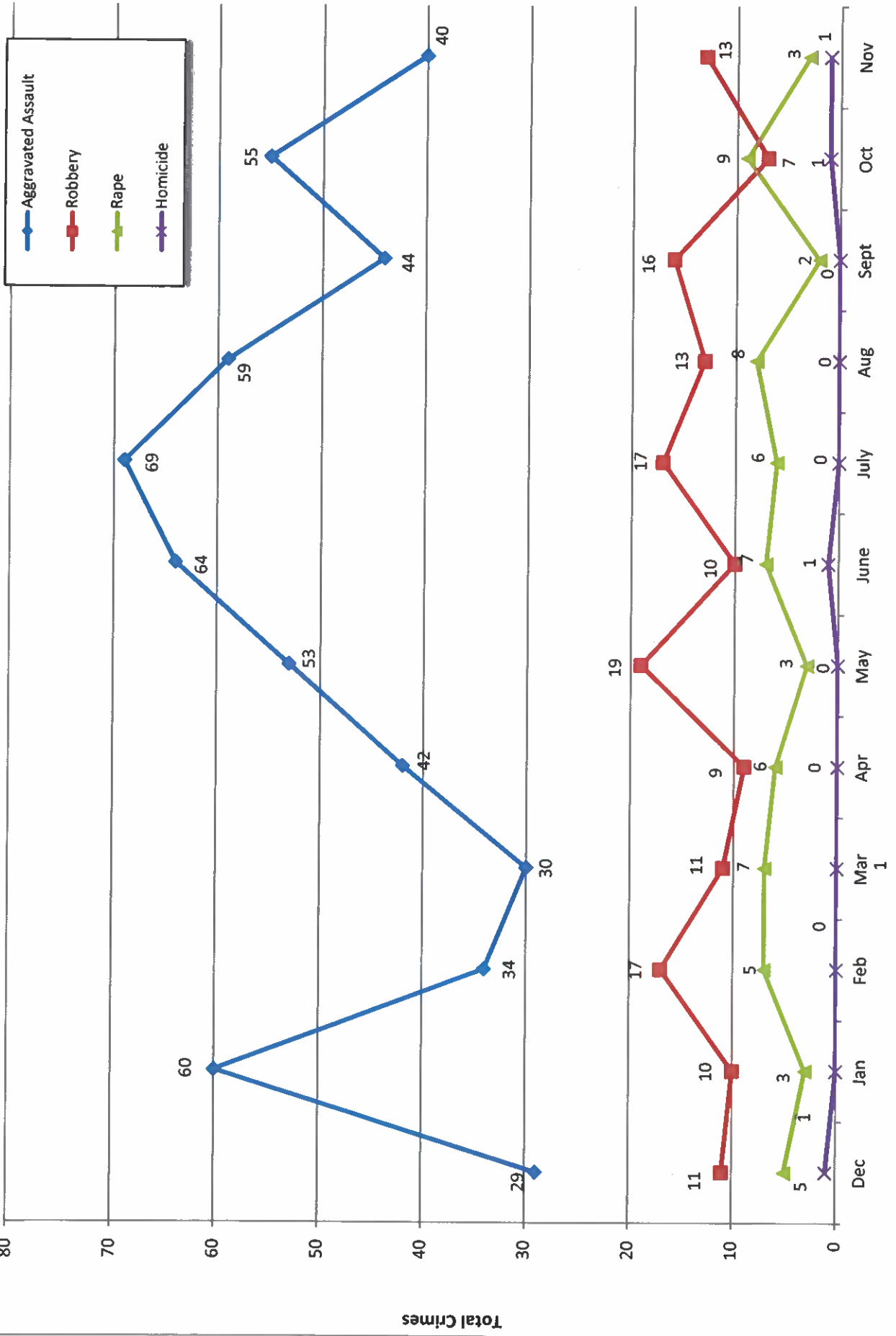
Part 1 Crimes by Month (Property Crimes) 2024



- 2023 -

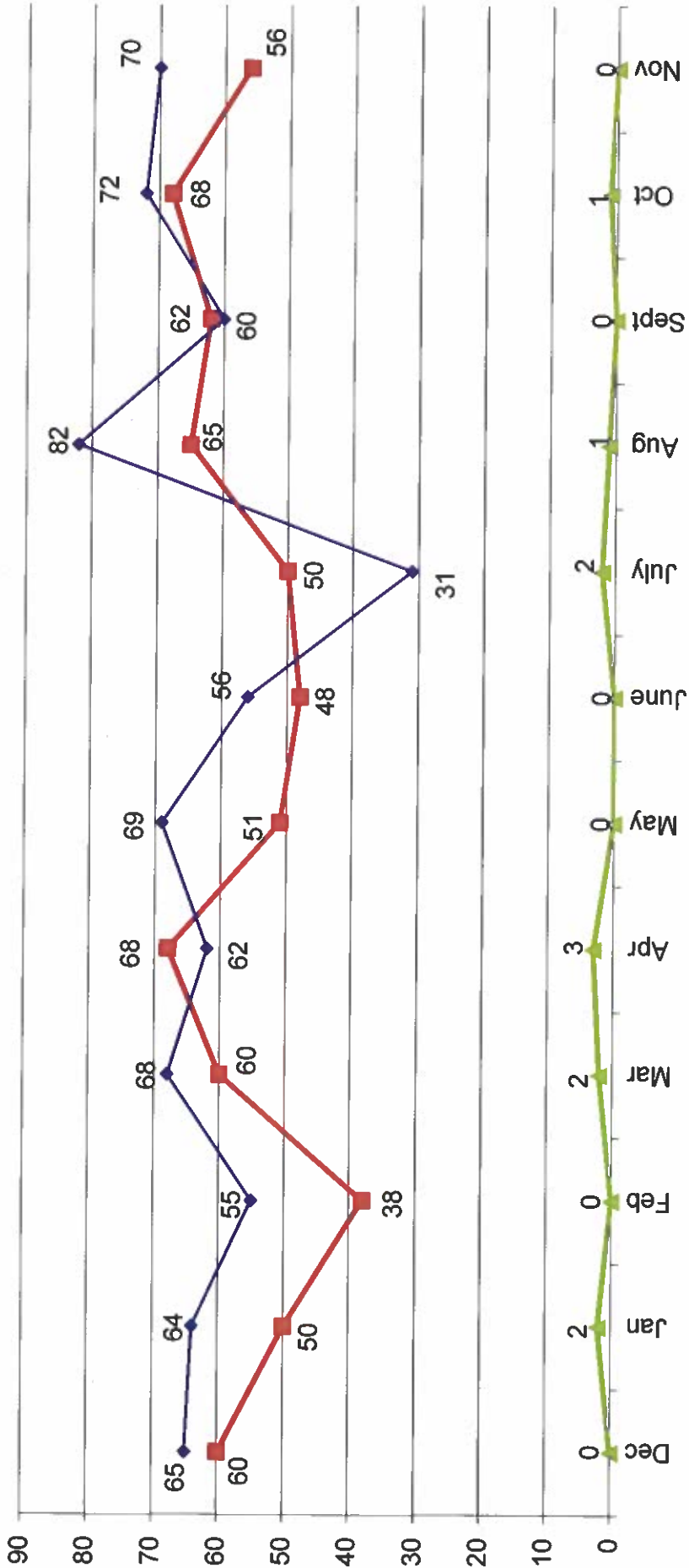
- 2024 -

Part 1 Crimes by Month (Violent Crimes) 2024



- 2023 - Month - 2024 -

Traffic Collisions 2024





UCR Crimes by GeoArea

Required Parameters
 Reporting Period: Nov 2024
 Agency: OCEANSIDE

Optional Parameters
 Geographical Area: All Beats
 Group by: Agency Select by: Neighborhood

Prior Report Number: S1STA120

Neighborhood	MURDER	RAPE (HISTORICAL)	RAPE ARMED	ST/ ARM	ASSAULT	VIOLENT	AGGRVD	ROBBERY--	---	AGGRVD	VIOLENT	---	BURGLARY---	---	LARCENY-THEFT---	TOTAL	THEFT	CRM TL	INDEX TL	CRIME	CAR	PROWL

Agency = OCEANSIDE																						
AIRPORT	0	0	0	0	1	1	0	0	0	0	1	0	6	6	1	4	5	2	13	14	5	5
EASTSIDE/CAPISTRANO	0	0	1	1	0	2	0	0	0	0	0	0	0	0	0	3	3	1	4	6	1	1
FIRE MOUNTAIN	0	1	0	1	1	3	0	4	4	22	28	50	0	54	57	9	9	9	9	9	9	9
GUAJOME	0	0	0	0	0	0	1	0	1	5	10	12	12	12	12	5	5	1	12	12	5	5
IVEY RAN/RAN DEL ORO	0	1	0	0	5	6	3	3	6	4	9	13	4	23	29	6	6	4	23	29	6	6
IVY RAN/RAN DEL ORO	0	0	0	0	3	3	1	0	1	0	2	2	0	3	6	0	0	3	6	0	0	0
LAKE	0	0	1	0	2	3	0	3	3	4	7	0	10	13	2	2	0	10	13	2	2	2
MIRA COSTA	0	-1	1	0	7	7	4	0	4	4	6	10	2	16	23	6	6	2	16	23	6	6
MISSN MESA/LOMA ALTA	0	2	0	1	2	5	10	0	3	3	12	17	0	20	30	9	9	20	30	9	9	9
MORRO HILLS	0	0	0	0	0	0	2	0	2	1	1	2	0	4	4	2	0	4	4	2	2	2
NORTH VALLEY	0	0	0	0	1	1	0	1	3	0	3	0	3	5	6	0	0	5	6	0	0	0
OCEAN HILLS	0	0	0	0	0	0	0	0	1	2	3	0	3	3	3	2	0	3	3	2	2	2
OCEANA	0	0	0	0	0	0	0	0	0	4	0	4	0	4	4	2	0	4	4	2	2	2
SAN LUIS REY	0	0	1	1	4	6	1	12	13	4	12	16	0	29	35	9	9	29	35	9	9	9
SOUTH OCEANSIDE	0	0	0	0	3	3	0	3	3	3	6	6	0	9	12	3	0	9	12	3	3	3
TOWNSITE	1	0	1	2	5	9	9	7	16	17	20	37	3	56	65	9	9	56	65	9	9	9
TRI CITY	0	0	0	0	3	3	0	0	0	3	5	8	1	9	12	3	0	9	12	3	3	3
UNKNOWN	0	0	0	0	0	0	0	0	0	0	0	0	0	0	0	0	0	0	0	0	0	0
SUB-TOTAL	1	3	6	7	40	57	25	38	63	87	109	196	15	274	331	73	15	274	331	73	73	73
GRAND TOTALS	1	3	6	7	40	57	25	38	63	87	109	196	15	274	331	73	15	274	331	73	73	73



UCR Crimes by GeoArea

Required Parameters
 Reporting Period: Jan 2024 to Nov 2024
 Agency: OCEANSIDE

Optional Parameters
 Geographical Area: All Beats
 Group by: Agency Select by: Neighborhood

Prior Report Number: S1STA120

Neighborhood	MURDER	RAPE	RAPE (HISTORICAL)	ROBBERY—	ARMED	ST/ ARM	ASSAULT	AGGRVD	VIOLENT	RESID	NRESID	TOTAL	\$400+	<\$400	TOTAL	THEFT	CRM TL	PROPERTY	CRIME	CAR	
				ROBBERY—	ARMED	ST/ ARM	ASSAULT	AGGRVD	VIOLENT	RESID	NRESID	TOTAL	\$400+	<\$400	TOTAL	THEFT	CRM TL	PROPERTY	CRIME	CAR	
Agency = OCEANSIDE																					
AIRPORT	0	1	0	0	3	1	29	1	34	0	35	35	14	15	29	12	76	110	110	12	
EASTSIDE/CAPISTRANO	0	2	2	2	2	1	34	1	39	14	7	21	27	39	66	22	109	148	148	34	
FIRE MOUNTAIN	0	2	2	2	1	16	28	2	47	6	21	27	137	207	344	13	384	431	431	63	
GUAJOME	0	4	3	3	2	2	17	2	25	18	6	24	63	53	116	19	159	184	184	49	
IVEY RAN/RAN DEL ORO	1	4	4	4	1	7	40	7	53	20	32	52	77	100	177	42	271	324	324	90	
IVY RAN/RAN DEL ORO	0	0	0	0	0	1	7	1	8	2	4	6	8	22	30	10	46	54	54	17	
LAKE	0	4	4	4	12	6	17	6	39	3	10	13	44	65	109	13	135	174	174	36	
MIRA COSTA	0	6	3	3	4	4	37	4	51	16	8	24	65	53	118	27	169	220	220	70	
MISSN MESA/LOMA ALTA	0	10	7	7	4	12	38	12	64	14	24	38	81	95	176	21	235	299	299	86	
MORRO HILLS	0	0	0	0	1	0	4	4	5	4	2	6	15	11	26	1	33	38	38	15	
NORTH VALLEY	0	4	3	3	2	2	38	2	46	16	5	21	15	35	50	7	78	124	124	22	
OCEAN HILLS	0	0	0	0	0	1	2	2	3	0	0	0	11	15	26	1	27	30	30	12	
OCEANA	0	0	0	0	0	0	9	0	9	2	0	2	21	17	38	4	44	53	53	13	
SAN LUIS REY	0	10	7	7	8	8	60	8	86	15	51	66	79	86	165	30	261	347	347	58	
SOUTH OCEANSIDE	1	2	1	1	0	2	26	2	31	13	14	27	48	49	97	16	140	171	171	24	
TOWNSITE	1	10	8	8	14	24	142	14	191	41	39	80	205	168	373	55	508	699	699	122	
TRI CITY	0	1	0	0	0	1	20	1	22	4	0	4	25	39	64	15	83	105	105	31	
UNKNOWN	0	1	1	1	0	0	2	2	3	0	0	0	6	3	9	0	9	12	12	5	
SUB-TOTAL	3	61	45	45	54	88	590	88	756	188	258	446	941	1,072	2,013	308	2,767	3,523	759	759	
GRAND TOTALS	3	61	45	45	54	88	590	88	756	188	258	446	941	1,072	2,013	308	2,767	3,523	759	759	