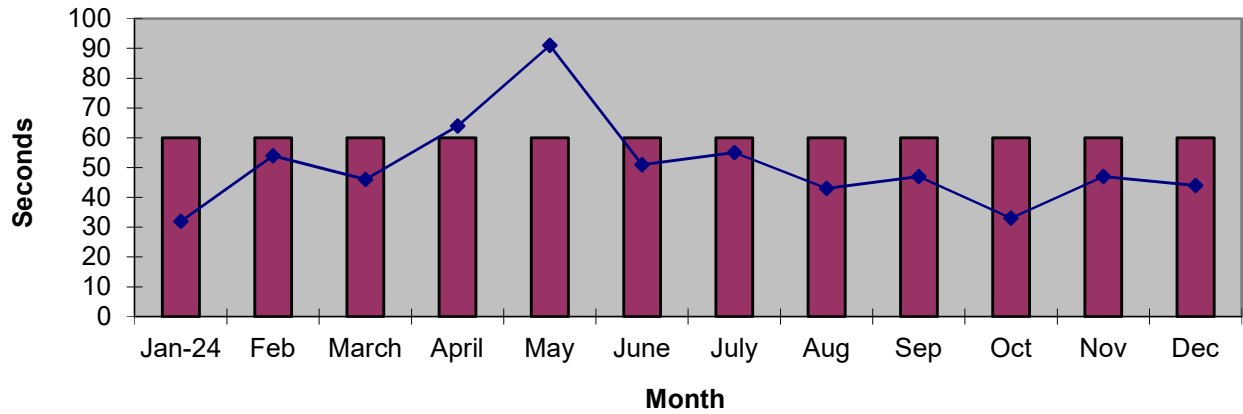
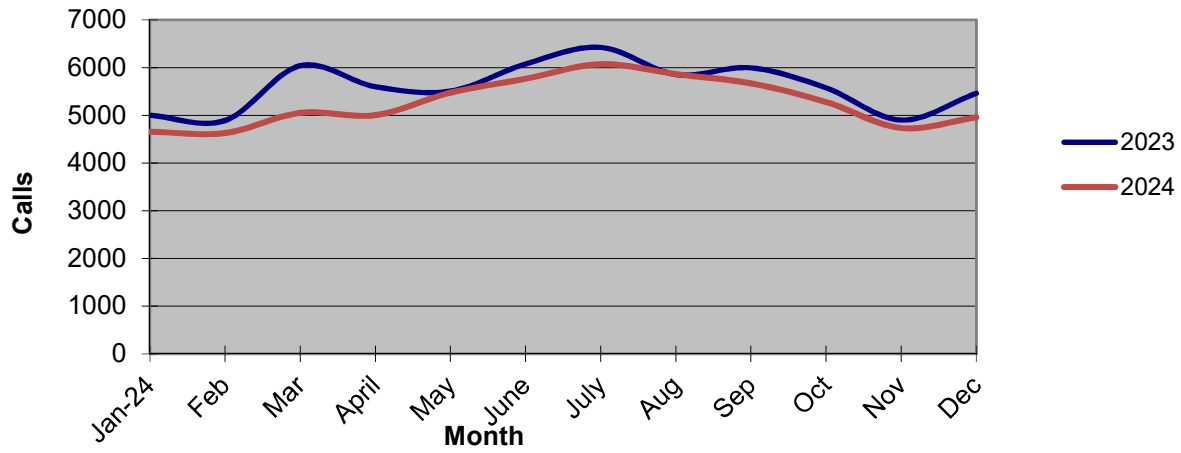


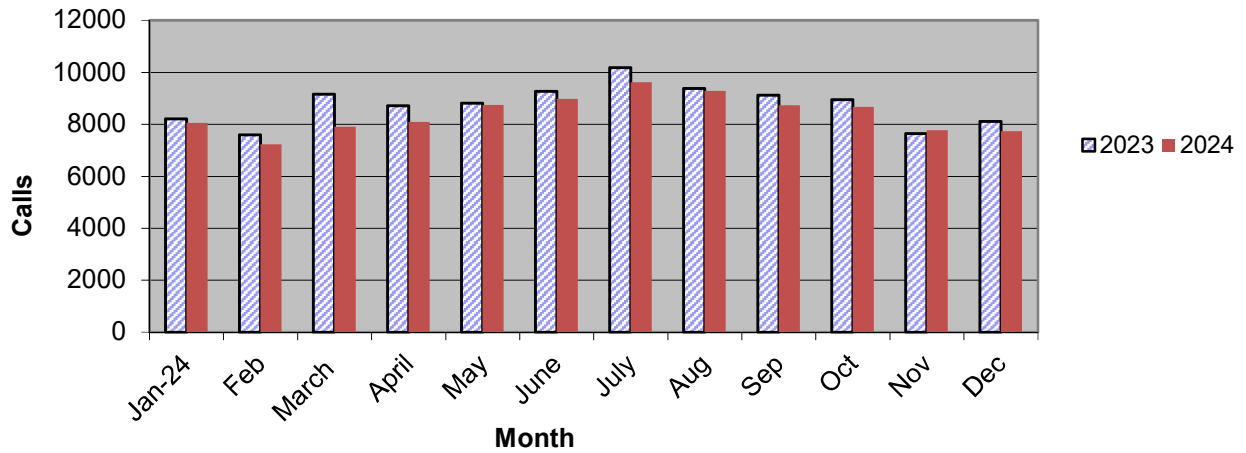
Priority 1 Dispatch Times- Police



911 Calls



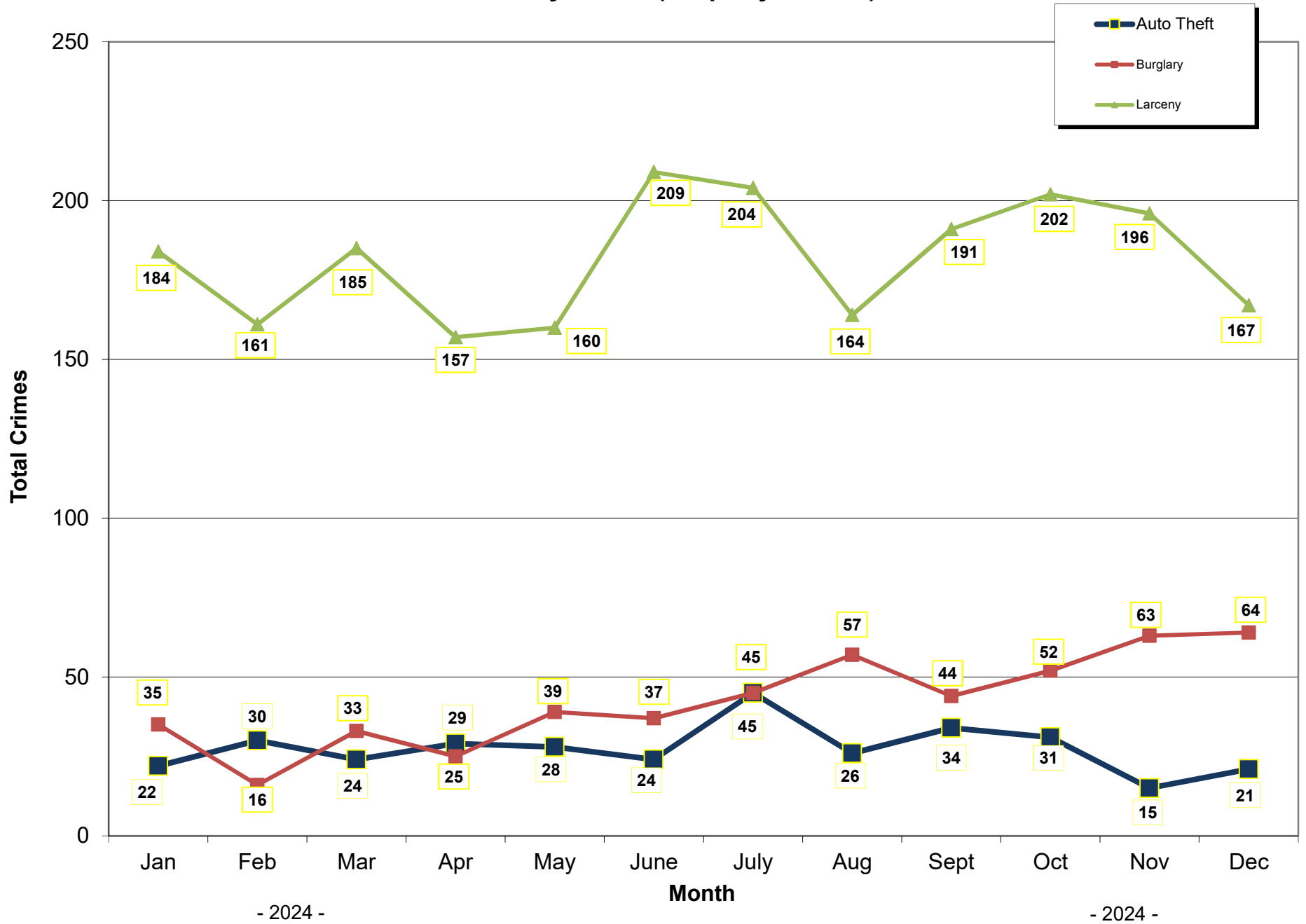
Calls for Service



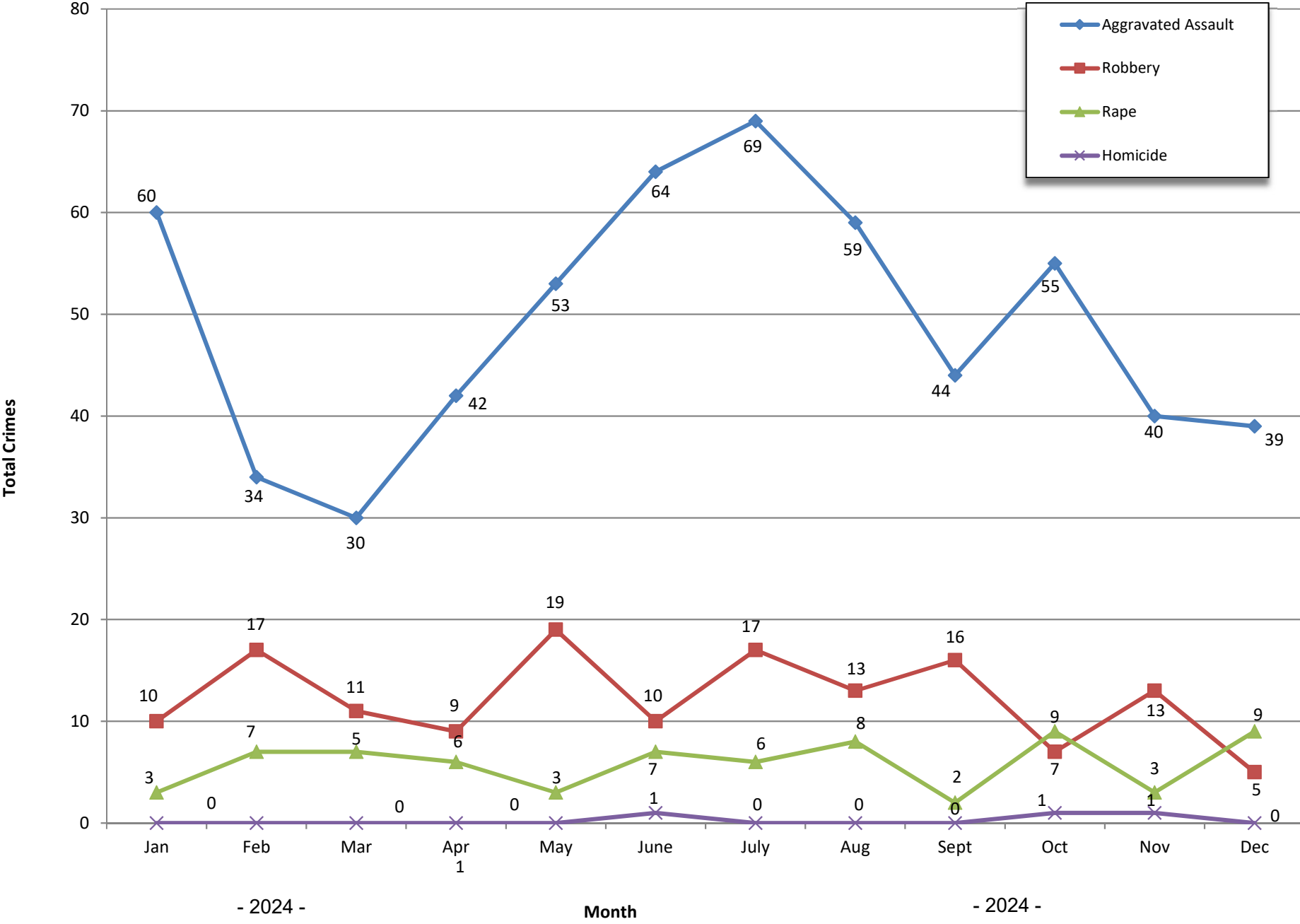
**OCEANSIDE POLICE DEPARTMENT
FBI INDEX CRIMES**

		MONTHLY CASE ACTIVITY 2024												YEAR TO DATE COMPARISON			
		JAN	FEB	MAR	APR	MAY	JUN	JUL	AUG	SEP	OCT	NOV	DEC	2023	2024	CHANGE	% CHANGE
1. HOMICIDE	Actual	0	0	0	0	0	1	0	0	0	1	1	0	4	3	-1	-25.0%
	Cleared	0	0	0	0	0	0	0	1	0	0	0	0	4	1	-3	-75.0%
2. RAPE	Actual	3	7	7	6	3	7	6	8	2	9	3	9	65	70	5	7.7%
	Cleared	0	0	0	2	0	0	0	1	0	0	1	0	5	4	-1	-20.0%
3. ROBBERY	Actual	10	17	11	9	19	10	17	13	16	7	13	5	111	147	36	32.4%
	Cleared	5	5	3	4	4	6	9	9	5	2	5	2	38	59	21	55.3%
4. AGGR. ASSAULT	Actual	60	34	30	42	53	64	69	59	44	55	40	39	587	589	2	0.3%
	Cleared	32	8	2	15	22	31	31	22	22	22	17	16	311	240	-71	-22.8%
5. BURGLARY	Actual	35	16	33	25	39	37	45	57	44	52	63	64	475	510	35	7.4%
	Cleared	3	1	6	3	3	3	8	6	5	3	5	6	46	52	6	13.0%
6. LARCENY THEFT	Actual	184	161	185	157	160	209	204	164	191	202	196	167	2231	2180	-51	-2.3%
	Cleared	6	12	10	3	6	12	8	4	11	14	6	14	102	106	4	3.9%
7. AUTO THEFT	Actual	22	30	24	29	28	24	45	26	34	31	15	21	374	329	-45	-12.0%
	Cleared	1	0	2	1	3	0	6	3	1	1	4	1	21	23	2	9.5%
TOTAL INDEX CRIMES	Actual	314	265	290	268	302	352	386	327	331	357	331	305	3847	3828	-19	-0.5%
	Cleared	47	26	23	28	38	52	62	46	44	42	38	39	560	485	-75	-13.4%
TOTAL PERSON CRIMES	Actual	73	58	48	57	75	82	92	80	62	72	57	53	767	809	42	5.5%
	Cleared	37	13	5	21	26	37	40	33	27	24	23	18	358	304	-54	-15.1%
TOTAL PROPERTY CRIMES	Actual	241	207	242	211	227	270	294	247	269	285	274	252	3080	3019	-61	-2.0%
	Cleared	10	13	18	7	12	15	22	13	17	18	15	21	169	181	12	7.1%
ARSON	Actual	1	4	1	1	5	2	1	1	3	2	0	2	48	48	0	0.0%
Y-T-D Loss \$224,219	Cleared	1	3	1	1	2	1	0	0	1	0	0	0	15	10	-5	-33.3%

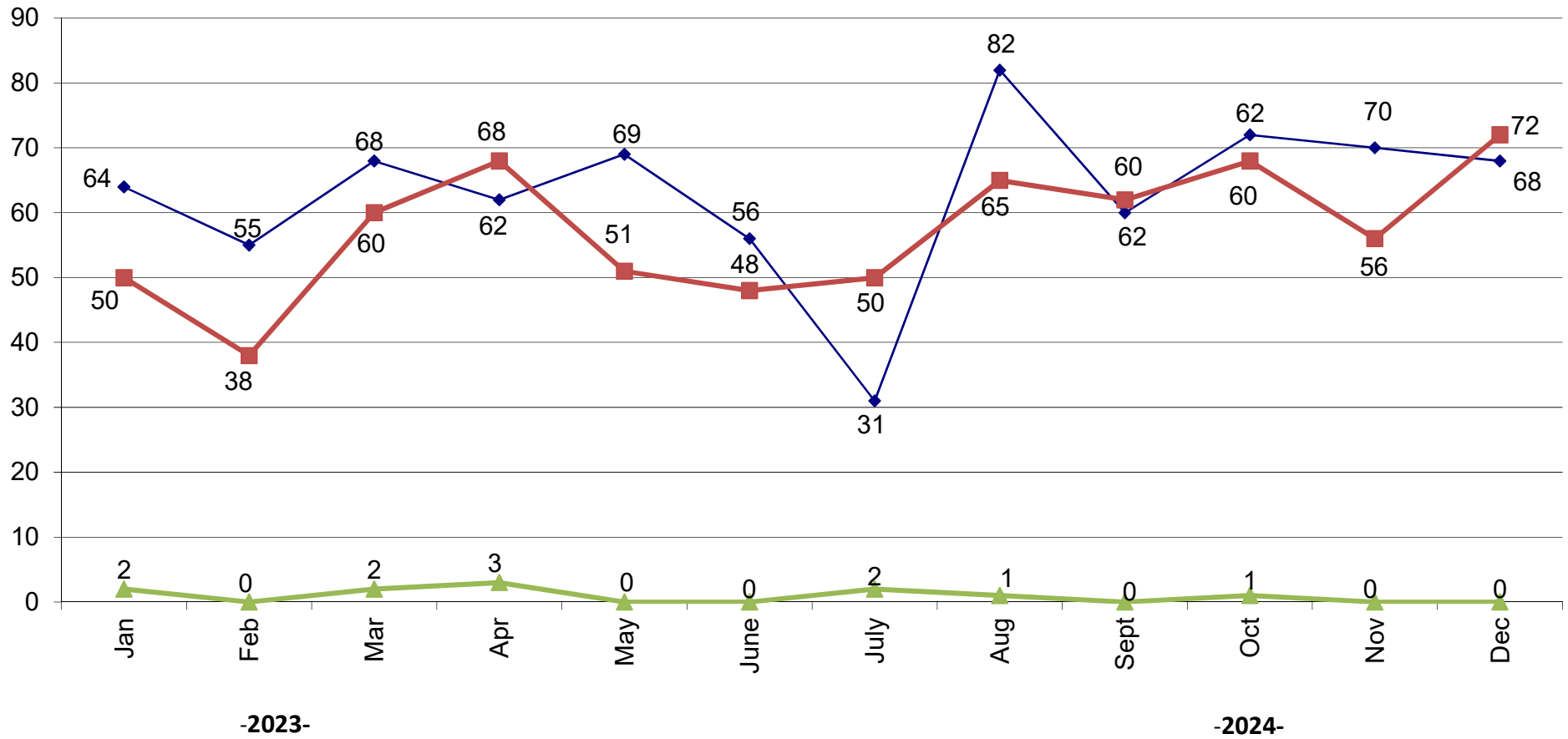
Part 1 Crimes by Month (Property Crimes) 2024



Part 1 Crimes by Month (Violent Crimes) 2024



Traffic Collisions 2024





UCR Crimes by GeoArea

Required Parameters

 Reporting Period: Dec 2024
 Agency: OCEANSIDE

Optional Parameters

 Geographical Area: All Beats
 Group by: Agency Select by: Neighborhood

Prior Report Number: S1STA120

Neighborhood	ROBBERY--					--- AGGRVD	VIOLENT	-----BURGLARY-----			---LARCENY-THEFT---			M.VEH	PROPERTY	CRIME	CAR
	MURDER	RAPE	RAPE (HISTORICAL)	ARMED	ST/ ARM	ASSAULT	CRM TL	RESID	NRESID	TOTAL	\$400+	<\$400	TOTAL	THEFT	CRM TL	IDX TL	PROWL

Agency = OCEANSIDE																	
AIRPORT	0	1	1	0	0	0	1	0	3	3	1	1	2	1	6	7	1
EASTSIDE/CAPISTRANO	0	1	1	0	0	1	2	0	0	0	1	4	5	2	7	9	3
FIRE MOUNTAIN	0	0	0	1	1	2	4	0	4	4	10	30	40	1	45	49	1
GUAJOME	0	0	0	0	0	0	0	3	0	3	3	9	12	0	15	15	6
IVEY RAN/RAN DEL ORO	0	1	1	0	1	3	5	3	3	6	7	4	11	3	20	25	5
IVY RAN/RAN DEL ORO	0	0	0	0	0	0	0	2	0	2	2	4	6	0	8	8	1
LAKE	0	0	0	0	0	0	0	0	2	2	3	5	8	1	11	11	2
MIRA COSTA	0	0	0	0	0	5	5	1	2	3	5	3	8	2	13	18	6
MISSN MESA/LOMA ALTA	0	1	1	0	0	6	7	0	2	2	1	6	7	3	12	19	2
MORRO HILLS	0	0	0	0	0	2	2	1	0	1	3	5	8	1	10	12	6
NORTH VALLEY	0	0	0	0	0	5	5	1	0	1	4	1	5	1	7	12	2
OCEAN HILLS	0	0	0	0	0	1	1	1	0	1	0	1	1	0	2	3	0
OCEANA	0	0	0	0	0	2	2	0	0	0	0	1	1	1	2	4	1
SAN LUIS REY	0	0	0	0	0	7	7	2	21	23	6	5	11	3	37	44	5
SOUTH OCEANSIDE	0	3	2	0	0	0	3	1	1	2	4	1	5	0	7	10	2
TOWNSITE	0	2	1	0	1	5	8	3	8	11	16	16	32	1	44	52	5
TRI CITY	0	0	0	1	0	0	1	0	0	0	4	1	5	1	6	7	3
UNKNOWN	0	0	0	0	0	0	0	0	0	0	0	0	0	0	0	0	0
SUB-TOTAL	0	9	7	2	3	39	53	18	46	64	70	97	167	21	252	305	51
GRAND TOTALS	0	9	7	2	3	39	53	18	46	64	70	97	167	21	252	305	51



UCR Crimes by GeoArea

Required Parameters

Reporting Period: Jan 2024 to Dec 2024
Agency: OCEANSIDE

Optional Parameters

Geographical Area: All Beats
Group by: Agency Select by: Neighborhood

Prior Report Number: S1STA120

Neighborhood	ROBBERY--		--- AGGRVD		VIOLENT		-----BURGLARY-----			---LARCENY-THEFT---			M.VEH PROPERTY		CRIME		CAR
	MURDER	RAPE	RAPE (HISTORICAL)	ARMED	ST/ ARM	ASSAULT	CRM TL	RESID	NRESID	TOTAL	\$400+	<\$400	TOTAL	THEFT	CRM TL	IDX TL	PROWL
Agency = OCEANSIDE																	
AIRPORT	0	2	1	3	1	29	35	0	38	38	15	16	31	13	82	117	13
EASTSIDE/CAPISTRANO	0	3	3	2	1	35	41	14	7	21	28	43	71	24	116	157	37
FIRE MOUNTAIN	0	2	2	2	17	30	51	6	25	31	147	237	384	14	429	480	64
GUAJOME	0	4	3	2	2	17	25	21	6	27	66	62	128	19	174	199	55
IVEY RAN/RAN DEL ORO	1	5	5	1	8	43	58	23	35	58	84	104	188	45	291	349	95
IVY RAN/RAN DEL ORO	0	0	0	0	1	7	8	4	4	8	10	26	36	10	54	62	18
LAKE	0	4	4	12	6	17	39	3	12	15	47	70	117	14	146	185	38
MIRA COSTA	0	6	3	4	4	42	56	17	10	27	70	56	126	29	182	238	76
MISSN MESA/LOMA ALTA	0	11	8	4	12	44	71	14	26	40	82	101	183	24	247	318	88
MORRO HILLS	0	0	0	1	0	6	7	5	2	7	18	16	34	2	43	50	21
NORTH VALLEY	0	4	3	2	2	43	51	17	5	22	19	36	55	8	85	136	24
OCEAN HILLS	0	0	0	0	1	3	4	1	0	1	11	16	27	1	29	33	12
OCEANA	0	0	0	0	0	11	11	2	0	2	21	18	39	5	46	57	14
SAN LUIS REY	0	10	7	8	8	67	93	17	72	89	85	91	176	33	298	391	63
SOUTH OCEANSIDE	1	5	3	0	2	26	34	14	15	29	52	50	102	16	147	181	26
TOWNSITE	1	12	9	14	25	147	199	44	47	91	221	184	405	56	552	751	127
TRI CITY	0	1	0	1	1	20	23	4	0	4	29	40	69	16	89	112	34
UNKNOWN	0	1	1	0	0	2	3	0	0	0	6	3	9	0	9	12	5
SUB-TOTAL	3	70	52	56	91	589	809	206	304	510	1,011	1,169	2,180	329	3,019	3,828	810
GRAND TOTALS	3	70	52	56	91	589	809	206	304	510	1,011	1,169	2,180	329	3,019	3,828	810