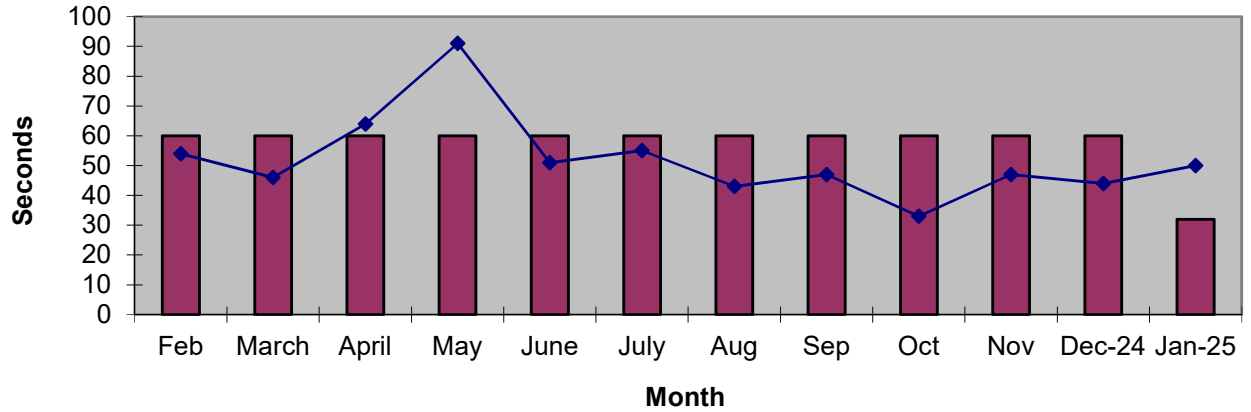
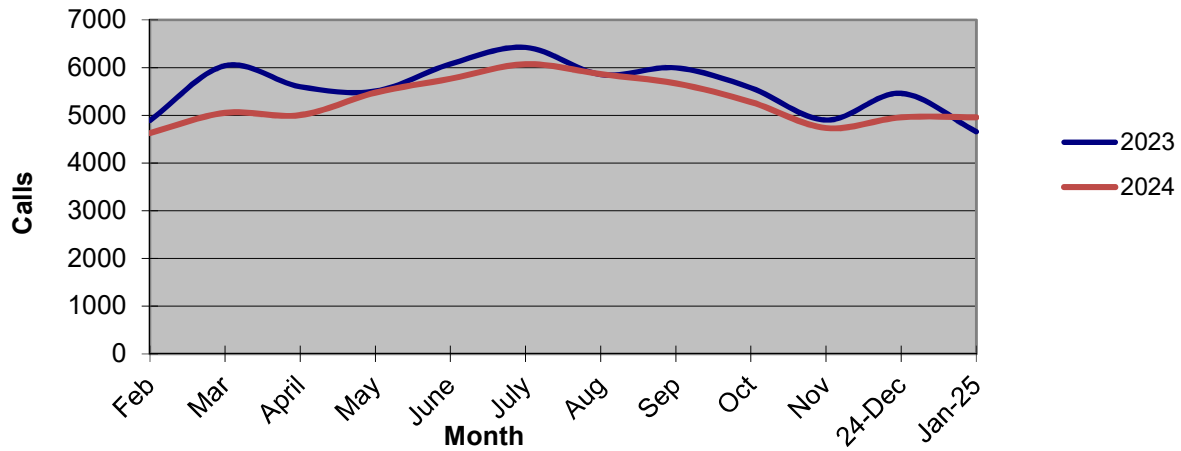


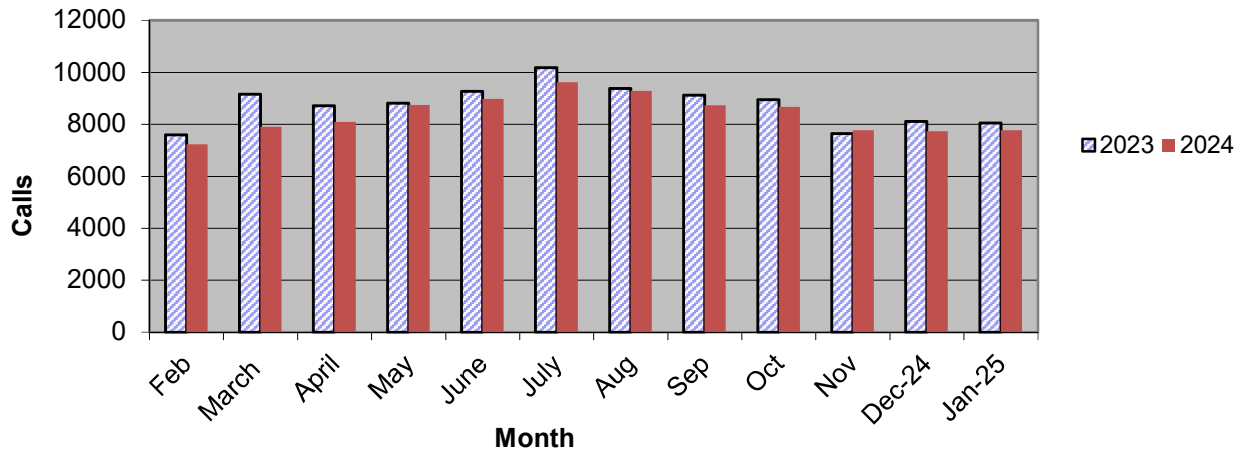
Priority 1 Dispatch Times- Police



911 Calls



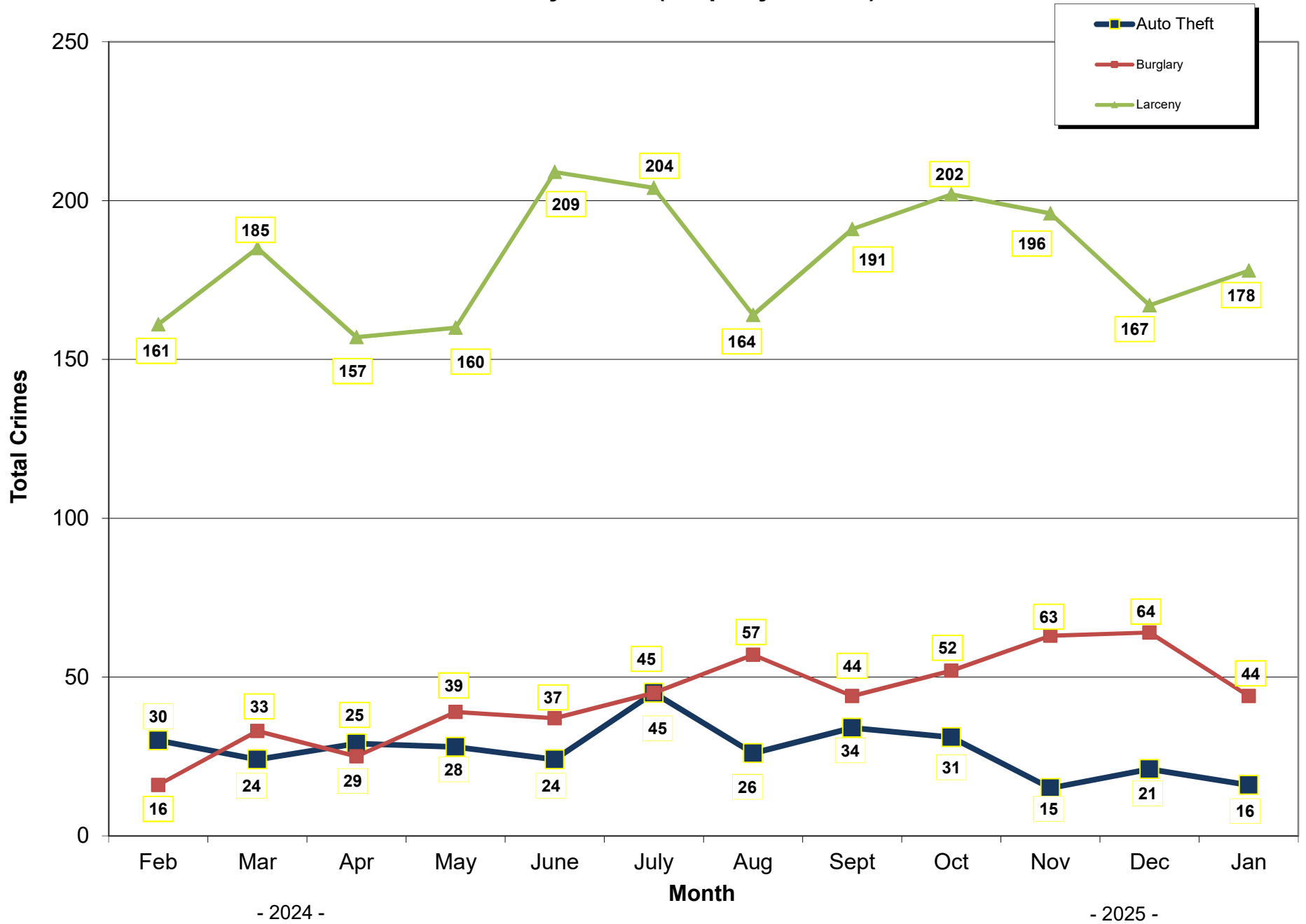
Calls for Service



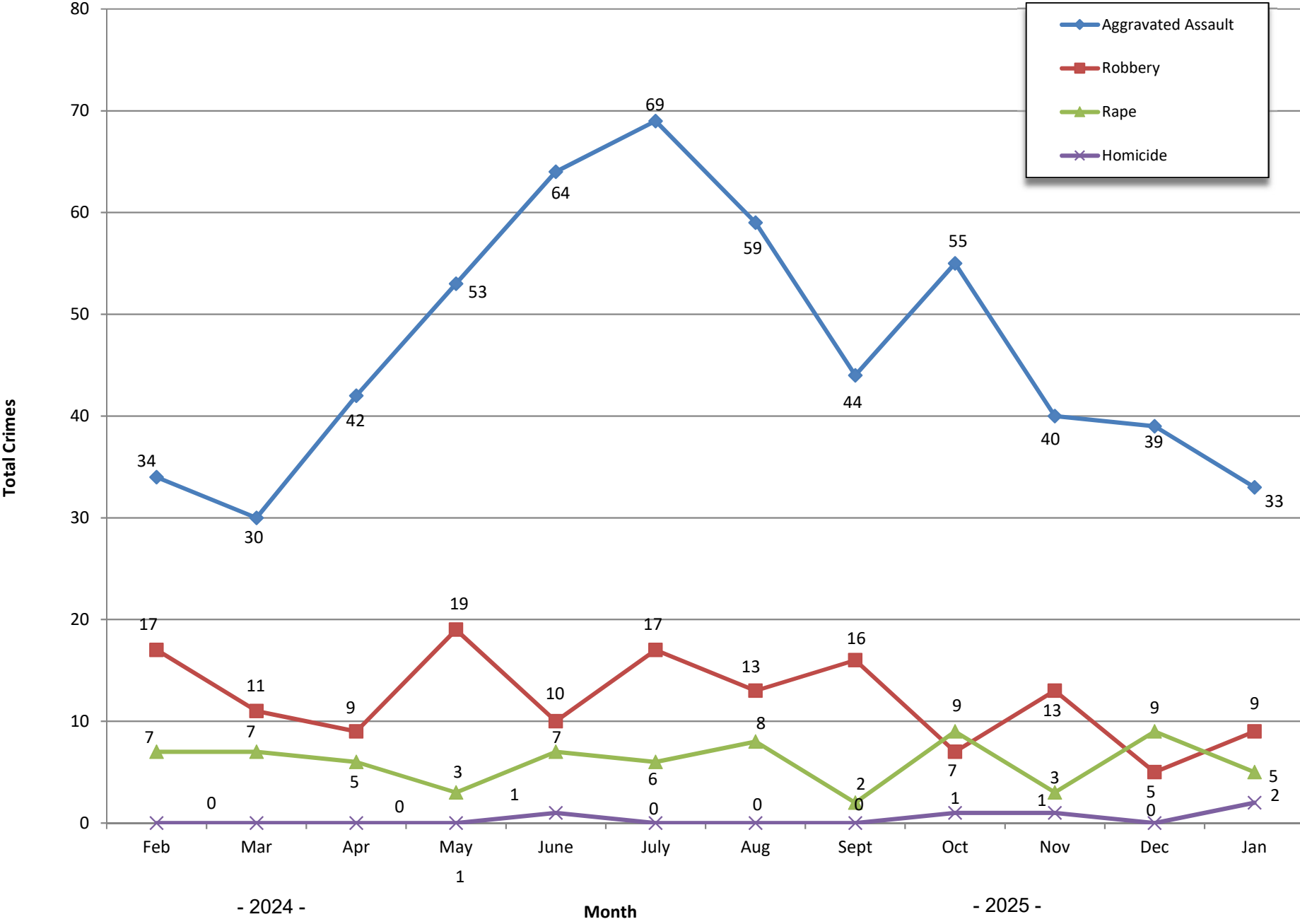
**OCEANSIDE POLICE DEPARTMENT
FBI INDEX CRIMES**

		MONTHLY CASE ACTIVITY 2025												YEAR TO DATE COMPARISON			
		JAN	FEB	MAR	APR	MAY	JUN	JUL	AUG	SEP	OCT	NOV	DEC	2024	2025	CHANGE	% CHANGE
1. HOMICIDE	Actual	2												0	2	2	200.0%
	Cleared	1												0	1	1	100.0%
2. RAPE	Actual	5												3	5	2	66.7%
	Cleared	0												0	0	0	0.0%
3. ROBBERY	Actual	9												10	9	-1	-10.0%
	Cleared	2												5	2	-3	-60.0%
4. AGGR. ASSAULT	Actual	33												60	33	-27	-45.0%
	Cleared	13												32	13	-19	-59.4%
5. BURGLARY	Actual	44												35	44	9	25.7%
	Cleared	3												3	3	0	0.0%
6. LARCENY THEFT	Actual	178												184	178	-6	-3.3%
	Cleared	13												6	13	7	116.7%
7. AUTO THEFT	Actual	16												22	16	-6	-27.3%
	Cleared	1												1	1	0	200.0%
TOTAL INDEX CRIMES	Actual	287												314	287	-27	-8.6%
	Cleared	33												47	33	-14	-29.8%
TOTAL PERSON CRIMES	Actual	49												73	49	-24	-32.9%
	Cleared	16												37	16	-21	-56.8%
TOTAL PROPERTY CRIMES	Actual	238												241	238	-3	-1.2%
	Cleared	17												10	17	7	70.0%
ARSON	Actual	7												1	7	6	600.0%
Y-T-D Loss \$10	Cleared	4												1	4	3	300.0%

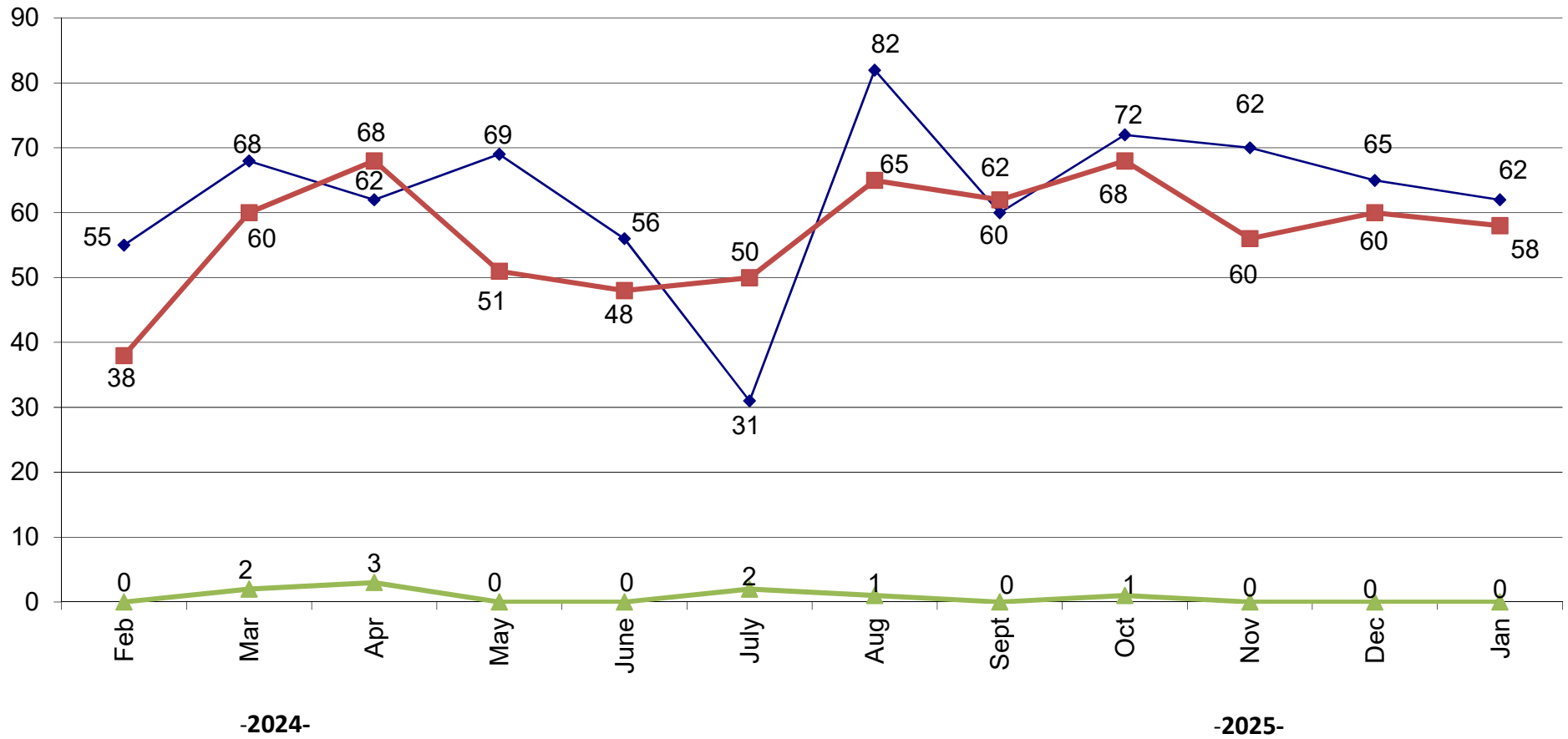
Part 1 Crimes by Month (Property Crimes) 2025



Part 1 Crimes by Month (Violent Crimes) 2025



Traffic Collisions 2025





UCR Crimes by GeoArea

Required Parameters

Reporting Period: Jan 2025
Agency: OCEANSIDE

Optional Parameters

Geographical Area: All Beats
Group by: Agency Select by: Neighborhood

Prior Report Number: S1STA120

Neighborhood	ROBBERY--		--- AGGRVD		VIOLENT	-----BURGLARY-----			---LARCENY-THEFT---			M.VEH	PROPERTY	CRIME	CAR		
	MURDER	RAPE	RAPE (HISTORICAL)	ARMED	ST/ ARM	ASSAULT	CRM TL	RESID	NRESID	TOTAL	\$400+	<\$400	TOTAL	THEFT	CRM TL	IDX TL	PROWL
Agency = OCEANSIDE																	
AIRPORT	0	0	0	0	0	0	0	0	12	12	2	1	3	0	15	15	1
EASTSIDE/CAPISTRANO	0	0	0	1	0	3	4	1	0	1	6	4	10	2	13	17	6
FIRE MOUNTAIN	1	0	0	0	1	1	3	2	2	4	7	24	31	1	36	39	2
GUAJOME	0	0	0	0	0	1	1	0	1	1	3	5	8	1	10	11	3
IVEY RAN/RAN DEL ORO	0	0	0	0	1	3	4	4	3	7	6	12	18	2	27	31	7
IVY RAN/RAN DEL ORO	0	1	0	0	0	0	1	1	0	1	0	0	0	0	1	2	0
LAKE	0	1	0	0	0	2	3	0	2	2	6	7	13	0	15	18	3
MIRA COSTA	0	1	1	0	0	4	5	0	1	1	4	5	9	1	11	16	3
MISSN MESA/LOMA ALTA	0	1	1	0	1	1	3	0	3	3	8	11	19	0	22	25	12
MORRO HILLS	0	0	0	0	0	0	0	0	0	0	1	1	2	0	2	2	1
NORTH VALLEY	0	0	0	1	0	3	4	0	0	0	5	4	9	1	10	14	5
OCEAN HILLS	0	0	0	0	0	0	0	0	0	0	2	1	3	0	3	3	1
OCEANA	0	0	0	0	0	0	0	0	0	0	1	1	2	1	3	3	0
SAN LUIS REY	0	1	1	0	1	7	9	0	4	4	10	11	21	1	26	35	9
SOUTH OCEANSIDE	0	0	0	1	1	1	3	0	1	1	4	3	7	0	8	11	4
TOWNSITE	0	0	0	1	0	4	5	0	6	6	5	10	15	5	26	31	2
TRI CITY	1	0	0	0	0	3	4	1	0	1	3	5	8	1	10	14	4
UNKNOWN	0	0	0	0	0	0	0	0	0	0	0	0	0	0	0	0	0
SUB-TOTAL	2	5	3	4	5	33	49	9	35	44	73	105	178	16	238	287	63
GRAND TOTALS	2	5	3	4	5	33	49	9	35	44	73	105	178	16	238	287	63