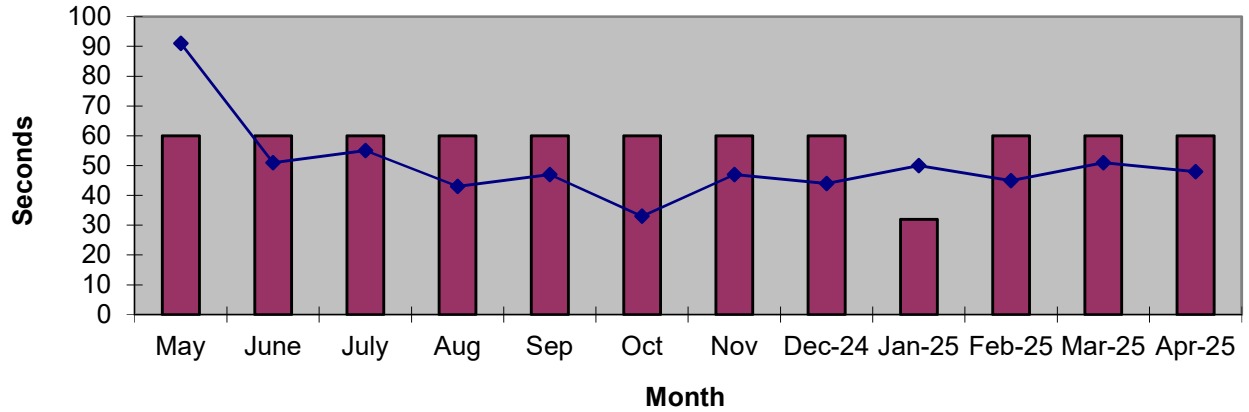
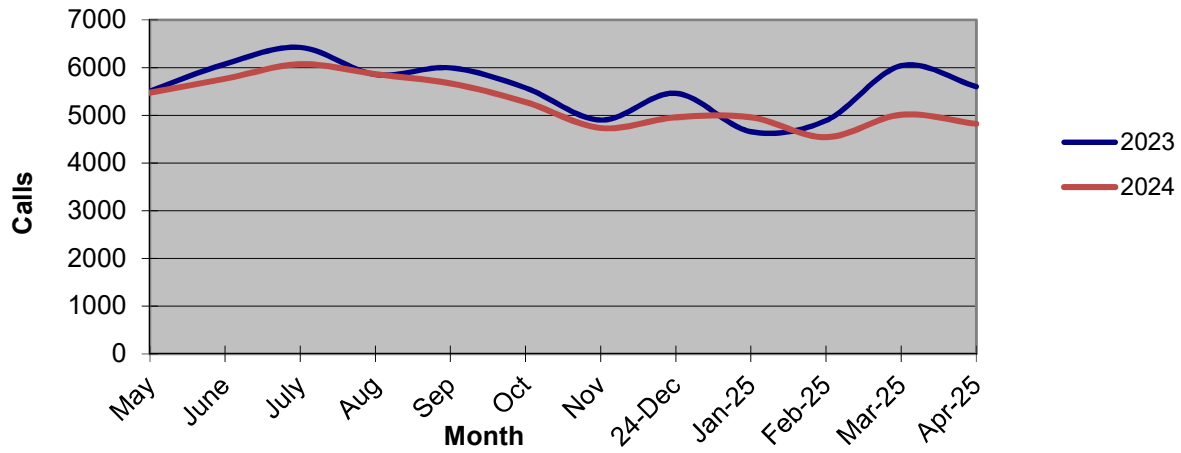


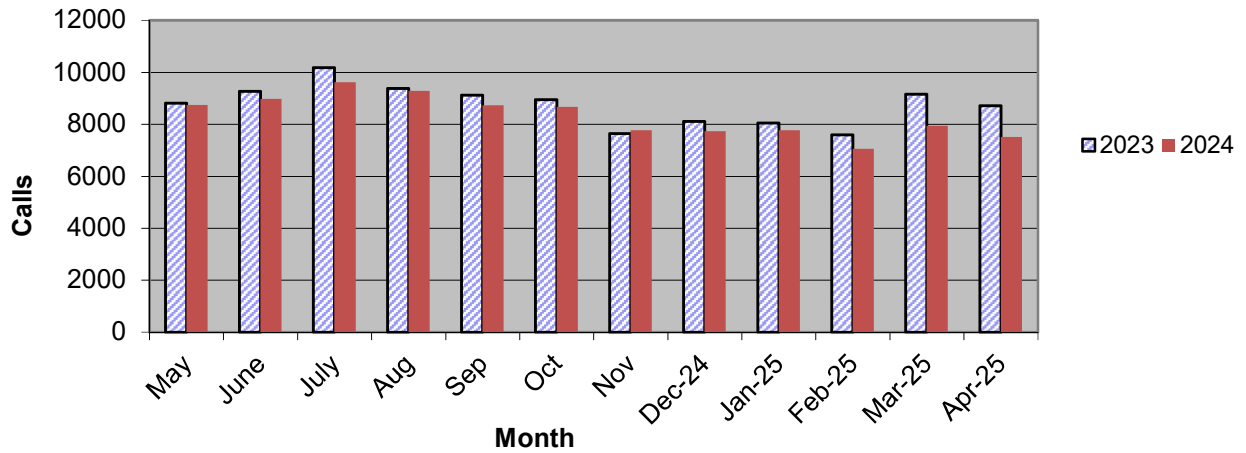
Priority 1 Dispatch Times- Police



911 Calls



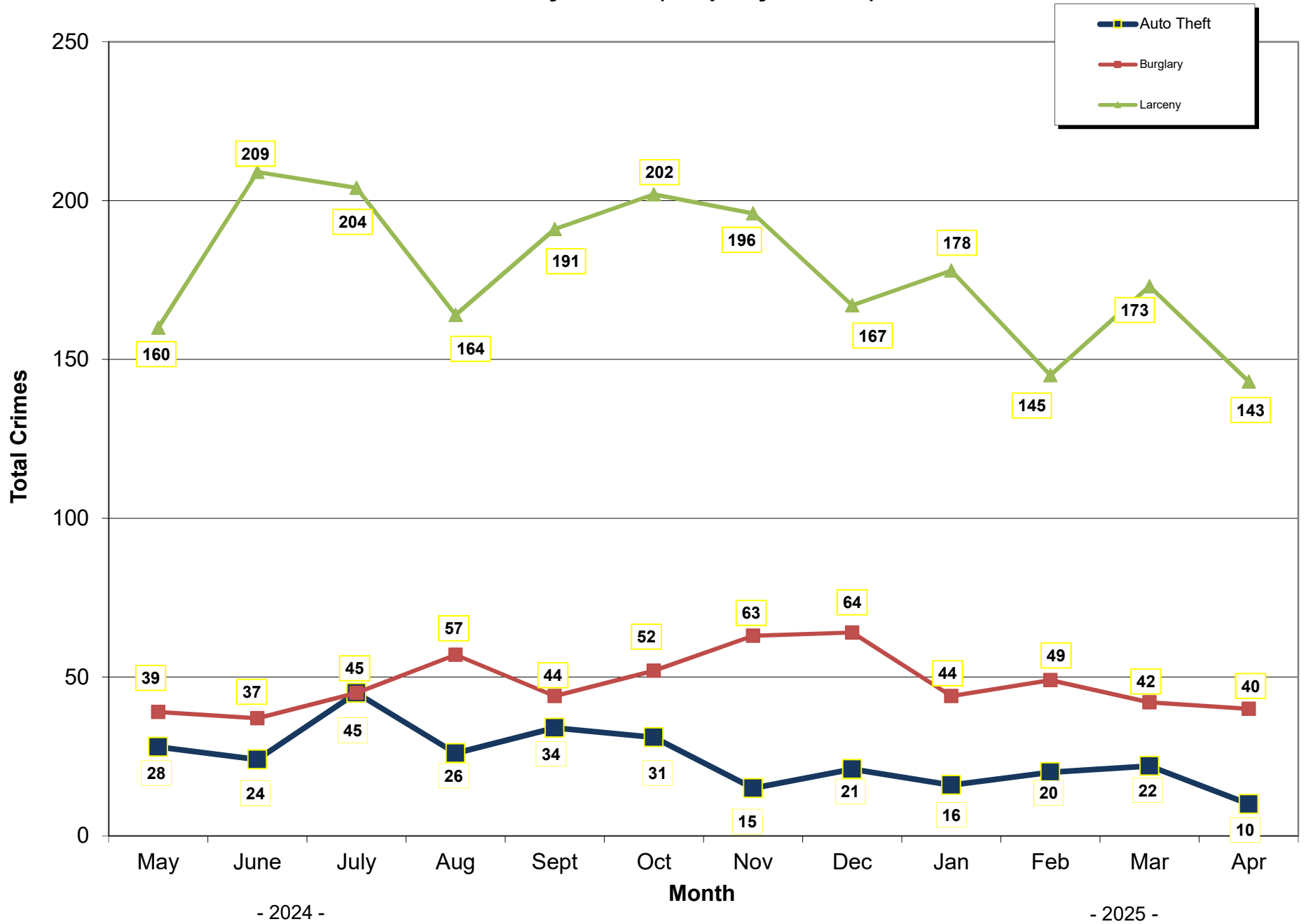
Calls for Service



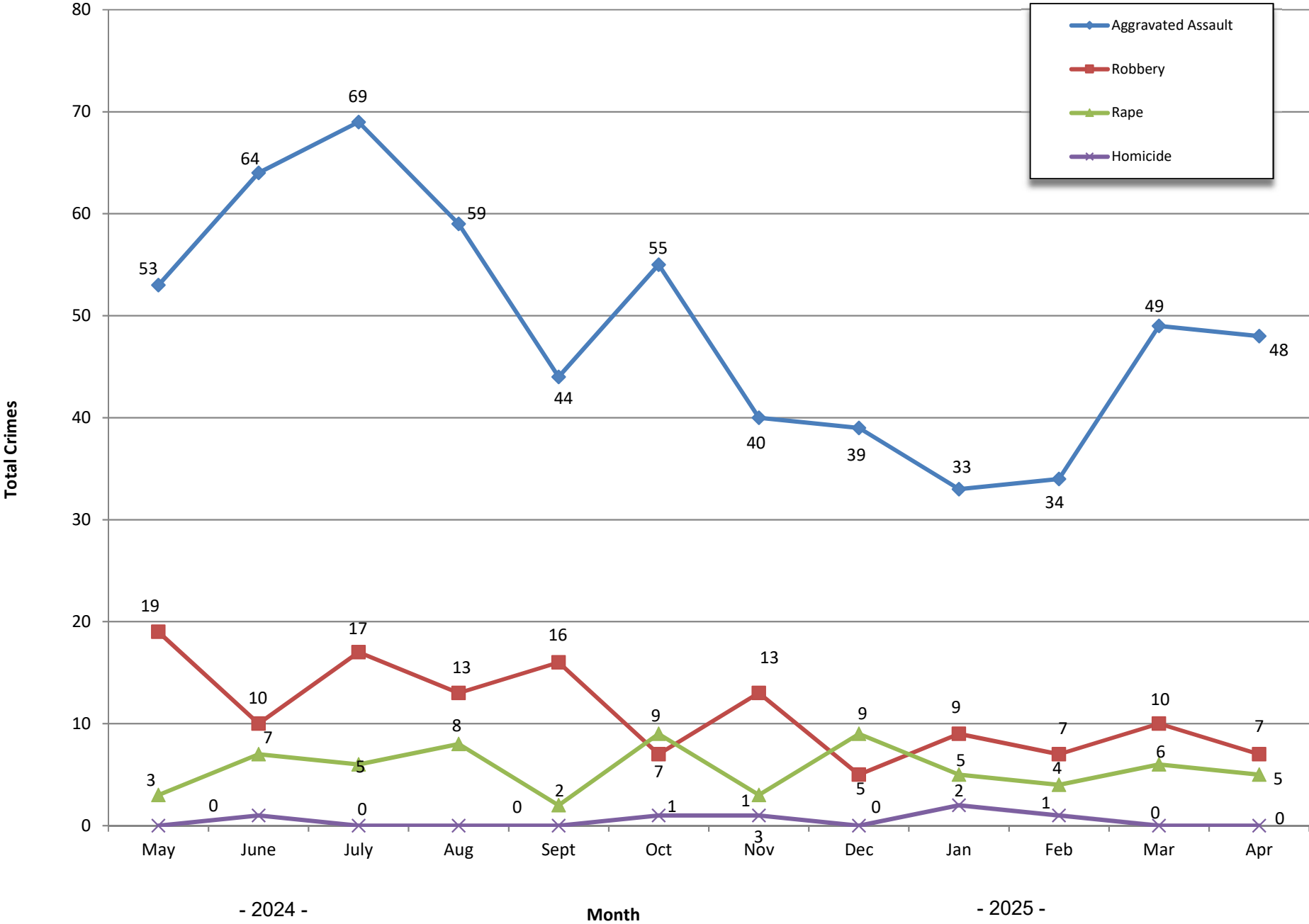
**OCEANSIDE POLICE DEPARTMENT
FBI INDEX CRIMES**

		MONTHLY CASE ACTIVITY 2025												YEAR TO DATE COMPARISON			
		JAN	FEB	MAR	APR	MAY	JUN	JUL	AUG	SEP	OCT	NOV	DEC	2024	2025	CHANGE	% CHANGE
1. HOMICIDE	Actual	2	1	0	0									0	3	3	300.0%
	Cleared	1	0	0	1									0	2	2	200.0%
2. RAPE	Actual	5	4	6	5									23	20	-3	-13.0%
	Cleared	0	0	1	0									2	1	-1	100.0%
3. ROBBERY	Actual	9	7	10	7									47	33	-14	-29.8%
	Cleared	2	4	3	2									17	11	-6	-35.3%
4. AGGR. ASSAULT	Actual	33	33	49	48									166	163	-3	-1.8%
	Cleared	13	19	24	20									57	76	19	33.3%
5. BURGLARY	Actual	44	49	42	40									109	175	66	60.6%
	Cleared	3	5	6	1									13	15	2	15.4%
6. LARCENY THEFT	Actual	178	145	173	143									687	639	-48	-7.0%
	Cleared	13	2	10	6									31	31	0	0.0%
7. AUTO THEFT	Actual	16	20	22	10									105	68	-37	-35.2%
	Cleared	1	1	3	0									4	5	1	25.0%
TOTAL INDEX CRIMES	Actual	287	259	302	253									1137	1101	-36	-3.2%
	Cleared	33	31	47	92									124	203	79	63.7%
TOTAL PERSON CRIMES	Actual	49	45	65	60									236	219	-17	-7.2%
	Cleared	16	23	28	23									76	90	14	18.4%
TOTAL PROPERTY CRIMES	Actual	238	214	195	193									901	840	-61	-6.8%
	Cleared	17	8	28	7									48	60	12	25.0%
ARSON	Actual	7	1	0	5									7	13	6	85.7%
Y-T-D Loss \$89,096	Cleared	4	1	0	2									6	7	1	16.7%

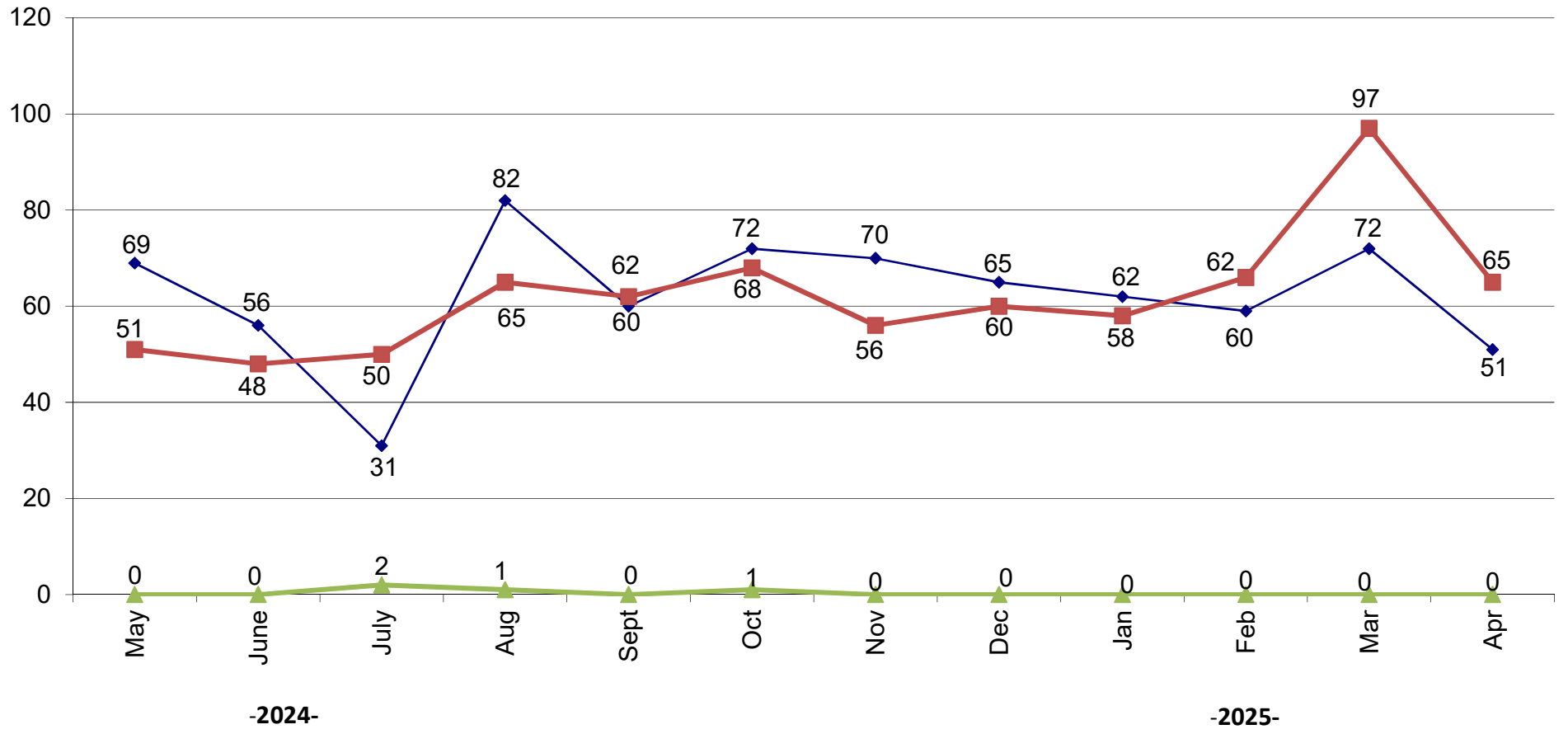
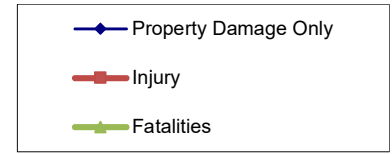
Part 1 Crimes by Month (Property Crimes) 2025



Part 1 Crimes by Month (Violent Crimes) 2025



Traffic Collisions 2025





UCR Crimes by GeoArea

Required Parameters

Reporting Period: Apr 2025
Agency: OCEANSIDE

Optional Parameters

Geographical Area: All Beats
Group by: Agency Select by: Neighborhood

Prior Report Number: S1STA120

Neighborhood	ROBBERY---					--- AGGRVD	VIOLENT	-----BURGLARY-----			---LARCENY-THEFT---		M.VEH	PROPERTY	CRIME	CAR	
	Homicide Total	RAPE	RAPE (HISTORICAL)	ARMED	ST/ ARM	ASSAULT	CRM TL	RESID	NRESID	TOTAL	\$400+	<\$400	TOTAL	THEFT	CRM TL	IDX TL	PROWL
Agency = OCEANSIDE																	
UNKNOWN	0	0	0	0	0	0	0	0	0	0	0	0	0	0	0	0	0
AIRPORT	0	0	0	0	0	1	1	0	5	5	1	3	4	0	9	10	4
EASTSIDE/CAPISTRANO	0	0	0	0	0	2	2	2	3	5	5	4	9	2	16	18	3
FIRE MOUNTAIN	0	1	0	0	0	2	3	1	6	7	7	6	13	0	20	23	0
GUAJOME	0	0	0	0	0	3	3	0	0	0	5	7	12	1	13	16	2
IVEY RAN/RAN DEL ORO	0	0	0	0	0	5	5	1	4	5	6	8	14	1	20	25	6
IVEY RAN/RAN DEL ORO	0	1	1	0	0	0	1	0	0	0	0	0	0	0	1	0	0
IVY RAN/RAN DEL ORO	0	0	0	0	0	0	0	0	0	0	1	0	1	1	2	2	1
LAKE	0	0	0	1	0	4	5	1	0	1	2	5	7	0	8	13	0
MIRA COSTA	0	0	0	0	0	2	2	0	1	1	0	6	6	0	7	9	5
MISSN MESA/LOMA ALTA	0	0	0	1	1	4	6	1	3	4	2	8	10	4	18	24	4
MORRO HILLS	0	0	0	0	0	0	0	1	0	1	0	1	1	0	2	2	0
NORTH VALLEY	0	0	0	0	0	4	4	0	0	0	1	5	6	0	6	10	2
OCEAN HILLS	0	0	0	0	0	0	0	0	0	0	3	5	8	0	8	8	3
OCEANA	0	0	0	0	0	0	0	0	0	0	1	1	2	0	2	2	1
SAN LUIS REY	0	0	0	0	1	1	2	1	3	4	6	12	18	1	23	25	4
SAN LUIS REY	0	1	1	0	0	0	1	0	0	0	1	1	2	0	2	3	1
SOUTH OCEANSIDE	0	2	0	0	1	1	4	0	0	0	1	4	5	0	5	9	2
TOWNSITE	0	0	0	1	1	19	21	2	5	7	13	11	24	0	31	52	7
TRI CITY	0	0	0	0	0	0	0	0	0	0	1	0	1	0	1	1	1
SUB-TOTAL	0	5	0	3	4	48	60	10	30	40	56	87	143	10	193	253	46
GRAND TOTALS	0	5	2	3	4	48	60	10	30	40	56	87	143	10	193	253	46



UCR Crimes by GeoArea

Required Parameters

Reporting Period: Jan 2025 to Apr 2025
Agency: OCEANSIDE

Optional Parameters

Geographical Area: All Beats
Group by: Agency Select by: Neighborhood

Prior Report Number: S1STA120

Neighborhood	ROBBERY---					--- AGGRVD	VIOLENT	-----BURGLARY-----			---LARCENY-THEFT---			M.VEH	PROPERTY	CRIME	CAR
	Homicide Total	RAPE	RAPE (HISTORICAL)	ARMED	ST/ ARM	ASSAULT	CRM TL	RESID	NRESID	TOTAL	\$400+	<\$400	TOTAL	THEFT	CRM TL	IDX TL	PROWL
Agency = OCEANSIDE																	
UNKNOWN	0	0	0	0	0	0	0	0	0	0	0	1	1	0	1	1	0
AIRPORT	0	0	0	0	0	3	3	0	36	36	3	10	13	1	50	53	6
EASTSIDE/CAPISTRANO	0	0	0	1	1	11	13	6	4	10	11	10	21	5	36	49	10
FIRE MOUNTAIN	1	1	0	2	4	5	13	4	12	16	31	63	94	1	111	124	7
GUAJOME	0	0	0	0	0	10	10	1	1	2	15	19	34	3	39	49	7
GUAJOME	0	1	1	0	0	0	1	0	0	0	1	1	2	0	2	3	1
IVEY RAN/RAN DEL ORO	0	2	0	0	3	20	25	9	11	20	23	38	61	12	93	118	28
IVEY RAN/RAN DEL ORO	0	2	1	0	0	0	2	0	0	0	1	1	2	2	4	6	2
IVY RAN/RAN DEL ORO	0	1	0	0	0	1	2	1	0	1	6	3	9	1	11	13	4
LAKE	0	1	1	0	0	0	1	0	0	0	1	1	2	0	2	3	0
LAKE	0	1	0	1	1	10	13	1	6	7	16	25	41	0	48	61	6
MIRA COSTA	0	0	0	0	0	15	15	0	6	6	11	19	30	3	39	54	14
MIRA COSTA	0	1	1	0	0	0	1	0	0	0	0	0	0	0	0	1	0
MISSN MESA/LOMA ALTA	0	1	1	0	0	0	1	0	0	0	1	1	2	0	2	3	1
MISSN MESA/LOMA ALTA	0	0	0	1	2	6	9	5	14	19	27	37	64	8	91	100	28
MORRO HILLS	0	1	1	0	0	0	1	0	0	0	0	0	0	0	0	1	0
MORRO HILLS	0	0	0	0	0	0	0	1	0	1	2	3	5	0	6	6	2
NORTH VALLEY	0	0	0	1	1	10	12	1	1	2	11	21	32	4	38	50	11
OCEAN HILLS	0	0	0	1	1	0	2	0	0	0	10	7	17	0	17	19	7
OCEANA	0	0	0	0	0	0	0	1	2	3	4	6	10	1	14	14	1
SAN LUIS REY	0	0	0	1	2	19	22	3	14	17	27	47	74	11	102	124	23
SAN LUIS REY	1	4	1	0	0	0	5	0	0	0	1	2	3	0	3	8	1
SOUTH OCEANSIDE	0	1	1	0	0	0	1	0	0	0	0	0	0	0	0	1	0
SOUTH OCEANSIDE	0	2	0	1	3	5	11	2	1	3	14	13	27	1	31	42	15
TOWNSITE	0	1	0	4	2	43	50	8	23	31	37	43	80	14	125	175	23
TRI CITY	1	0	0	0	0	5	6	1	0	1	6	9	15	1	17	23	7
SUB-TOTAL	3	20	0	13	20	163	219	44	131	175	259	380	639	68	882	1,101	204
GRAND TOTALS	3	20	8	13	20	163	219	44	131	175	259	380	639	68	882	1,101	204