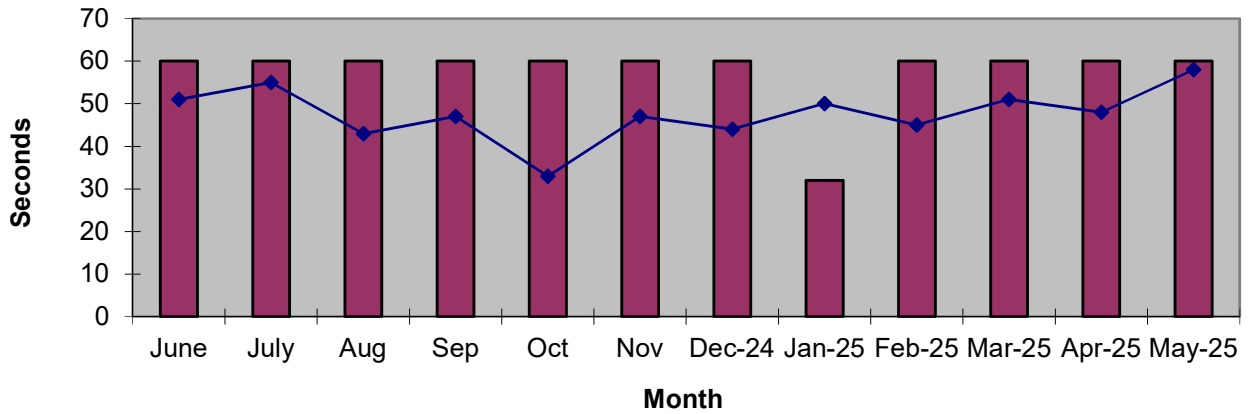
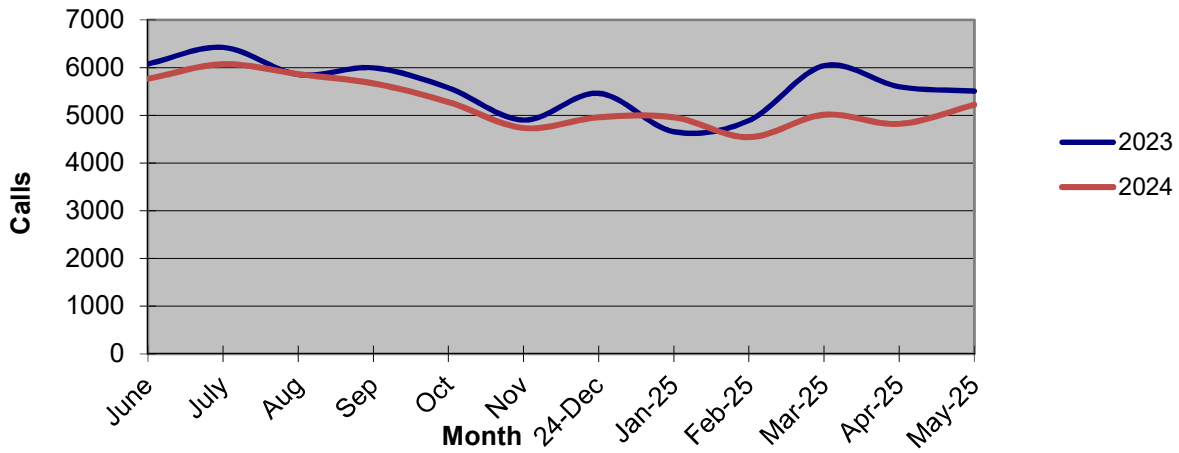


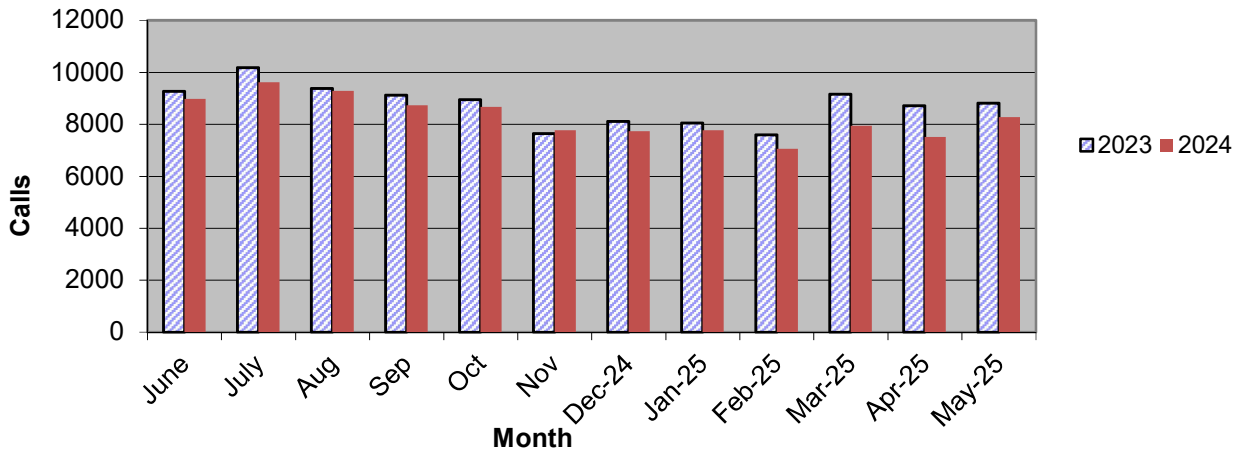
Priority 1 Dispatch Times- Police



911 Calls



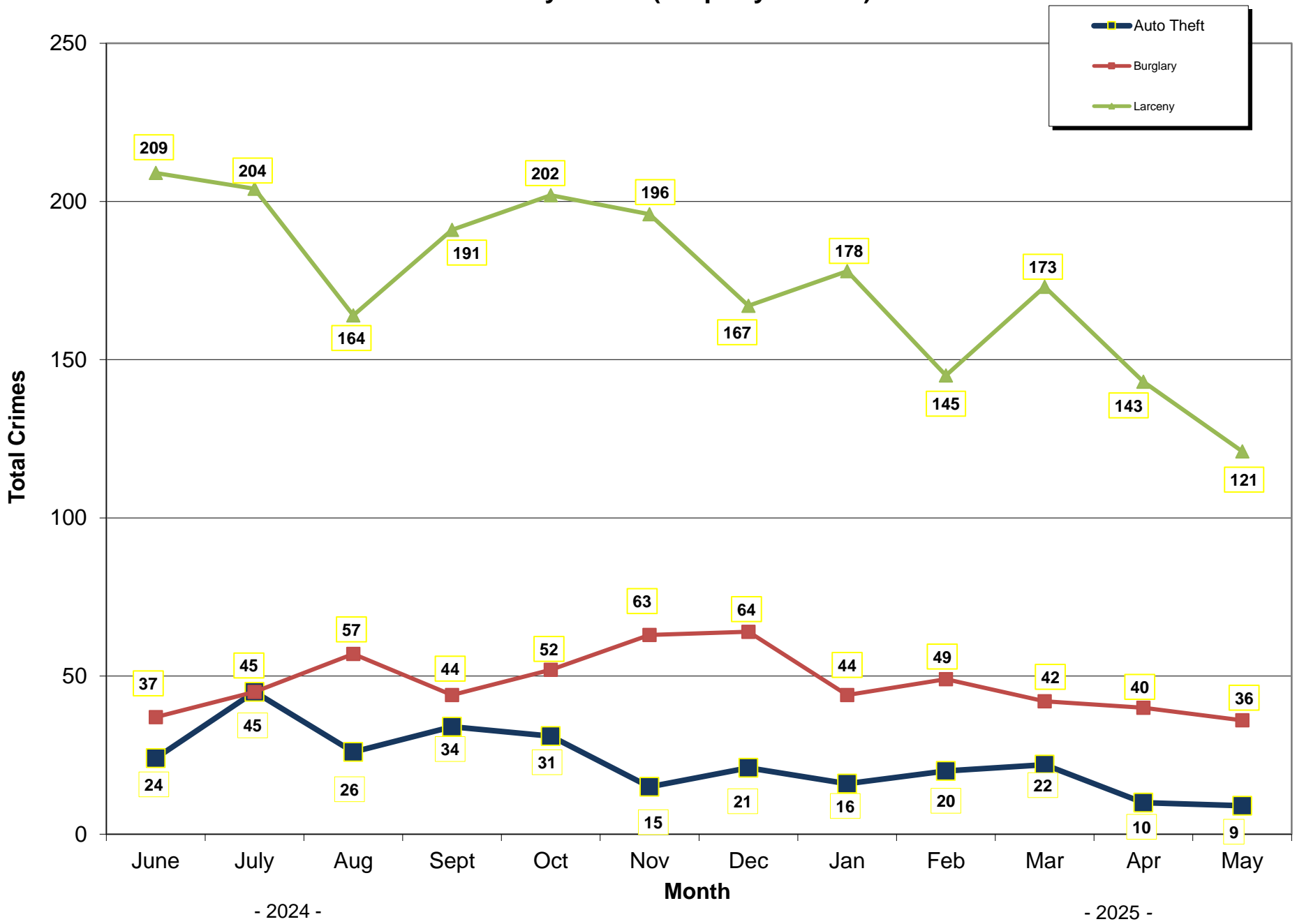
Calls for Service



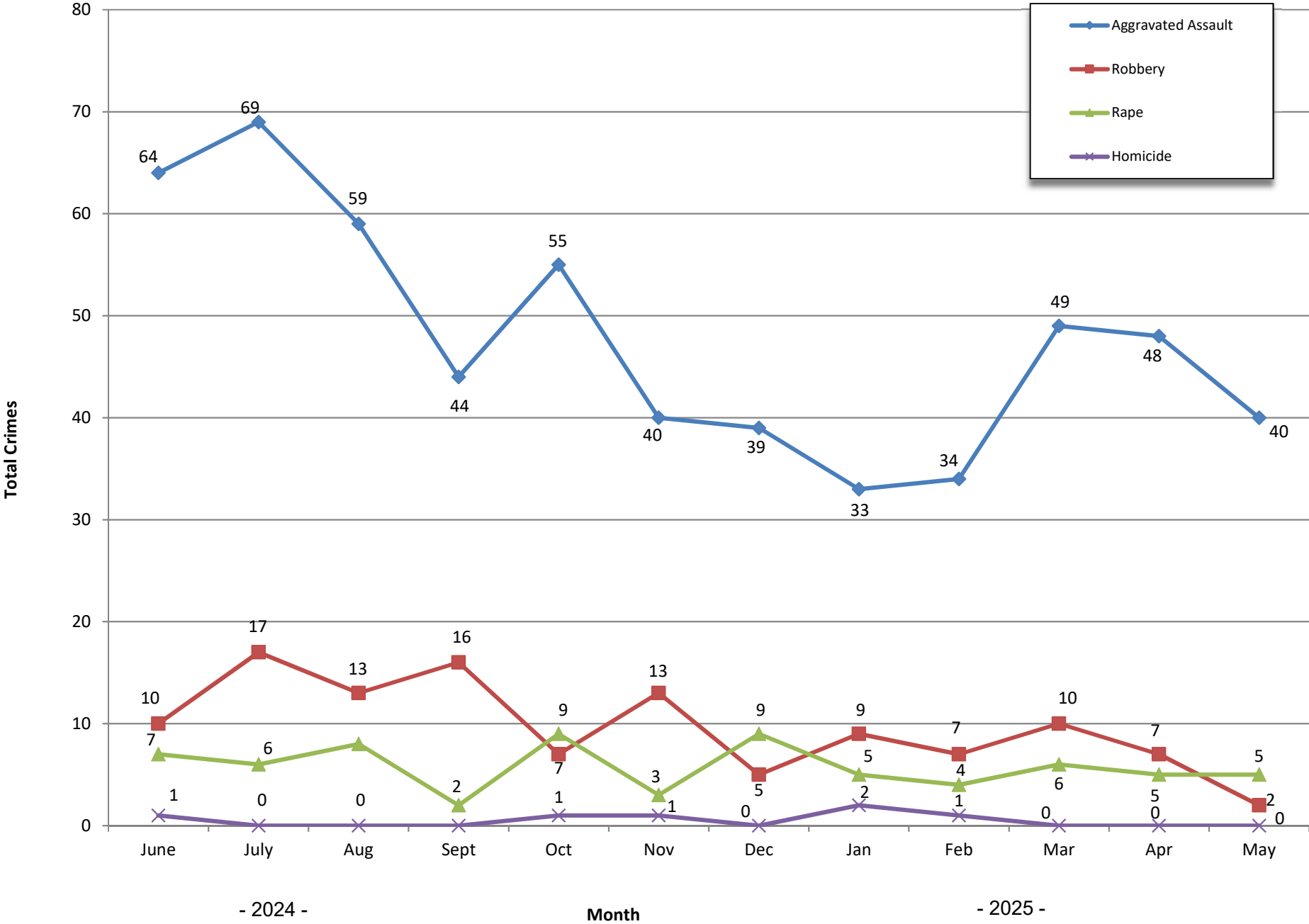
**OCEANSIDE POLICE DEPARTMENT
FBI INDEX CRIMES**

		MONTHLY CASE ACTIVITY 2025											YEAR TO DATE COMPARISON				
		JAN	FEB	MAR	APR	MAY	JUN	JUL	AUG	SEP	OCT	NOV	DEC	2024	2025	CHANGE	% CHANGE
1. HOMICIDE	Actual	2	1	0	0	0								0	3	3	300.0%
	Cleared	1	0	0	1	0								0	2	2	200.0%
2. RAPE	Actual	5	4	6	6	5								26	26	0	0.0%
	Cleared	0	0	1	1	0								2	2	0	0.0%
3. ROBBERY	Actual	9	7	10	10	2								66	38	-28	-42.4%
	Cleared	2	4	3	3	2								21	14	-7	-33.3%
4. AGGR. ASSAULT	Actual	33	33	49	49	40								219	204	-15	-6.8%
	Cleared	13	19	24	24	26								79	106	27	34.2%
5. BURGLARY	Actual	44	49	42	42	36								148	213	65	43.9%
	Cleared	3	5	6	6	3								16	23	7	43.8%
6. LARCENY THEFT	Actual	178	145	173	173	121								847	790	-57	-6.7%
	Cleared	13	2	10	10	8								37	43	6	16.2%
7. AUTO THEFT	Actual	16	20	22	22	9								133	89	-44	-33.1%
	Cleared	1	1	3	3	0								7	8	1	14.3%
TOTAL INDEX CRIMES	Actual	287	259	302	302	213								1439	1363	-76	-5.3%
	Cleared	33	31	47	47	39								162	197	35	21.6%
TOTAL PERSON CRIMES	Actual	49	45	65	60	47								311	266	-45	-14.5%
	Cleared	16	23	28	23	28								102	118	16	15.7%
TOTAL PROPERTY CRIMES	Actual	238	214	195	193	166								1128	1006	-122	-10.8%
	Cleared	17	8	28	7	11								60	71	11	18.3%
ARSON	Actual	7	1	0	5	2								12	15	3	25.0%
Y-T-D Loss \$198,606	Cleared	4	1	0	2	1								8	8	0	0.0%

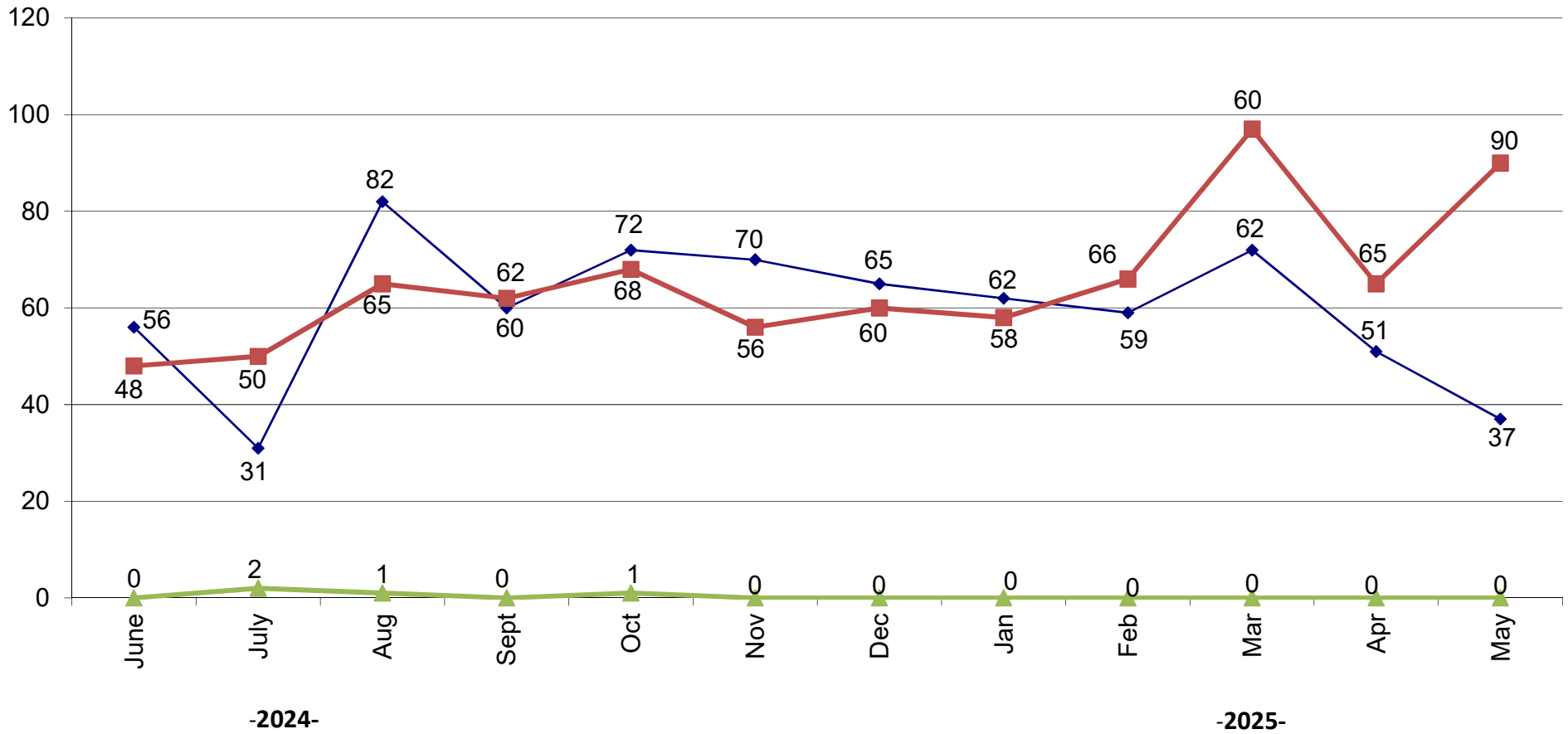
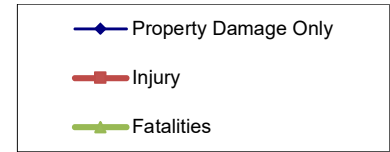
Part 1 Crimes by Month (Property Crimes) 2025



Part 1 Crimes by Month (Violent Crimes) 2025



Traffic Collisions 2025





UCR Crimes by GeoArea

Required Parameters

Reporting Period: May 2025
 Agency: OCEANSIDE

Optional Parameters

Geographical Area: All Beats
 Group by: Agency Select by: Neighborhood

Prior Report Number: S1STA120

Neighborhood	ROBBERY--					--- AGGRVD	VIOLENT	-----BURGLARY-----			---LARCENY-THEFT---			M.VEH	PROPERTY	CRIME	CAR
	MURDER	RAPE	RAPE (HISTORICAL)	ARMED	ST/ ARM	ASSAULT	CRM TL	RESID	NRESID	TOTAL	\$400+	<\$400	TOTAL	THEFT	CRM TL	IDX TL	PROWL

Agency = OCEANSIDE																	
AIRPORT	0	0	0	0	0	1	1	0	-1	-1	1	1	2	0	1	2	0
EASTSIDE/CAPISTRANO	0	0	0	0	0	2	2	1	1	2	2	5	7	0	9	11	4
FIRE MOUNTAIN	0	0	0	1	-1	0	0	0	2	2	5	5	10	1	13	13	0
GUAJOME	0	1	1	0	0	1	2	3	0	3	7	3	10	-1	12	14	2
IVEY RAN/RAN DEL ORO	0	1	0	0	0	3	4	2	2	4	4	6	10	2	16	20	5
IVY RAN/RAN DEL ORO	0	0	0	0	0	1	1	2	0	2	1	1	2	0	4	5	1
LAKE	0	0	0	0	1	2	3	1	2	3	3	9	12	1	16	19	3
MIRA COSTA	0	0	0	0	0	4	4	1	0	1	4	3	7	1	9	13	5
MISSN MESA/LOMA ALTA	0	0	0	0	0	5	5	2	2	4	2	7	9	0	13	18	5
MORRO HILLS	0	0	0	0	0	2	2	0	1	1	1	0	1	0	2	4	1
NORTH VALLEY	0	1	0	0	0	1	2	1	0	1	1	3	4	0	5	7	1
OCEAN HILLS	0	1	1	0	0	1	2	0	0	0	3	1	4	0	4	6	3
OCEANA	0	0	0	0	0	1	1	0	0	0	0	1	1	0	1	2	0
SAN LUIS REY	0	0	0	0	1	3	4	2	3	5	9	6	15	1	21	25	9
SOUTH OCEANSIDE	0	0	0	0	0	3	3	0	2	2	3	3	6	2	10	13	2
TOWNSITE	0	0	0	0	0	6	6	2	3	5	6	11	17	2	24	30	6
TRI CITY	0	1	1	0	0	4	5	1	1	2	1	3	4	0	6	11	4
UNKNOWN	0	0	0	0	0	0	0	0	0	0	0	0	0	0	0	0	0
SUB-TOTAL	0	5	3	1	1	40	47	18	18	36	53	68	121	9	166	213	51
GRAND TOTALS	0	5	3	1	1	40	47	18	18	36	53	68	121	9	166	213	51



UCR Crimes by GeoArea

Required Parameters

Reporting Period: Jan 2025 to May 2025
 Agency: OCEANSIDE

Optional Parameters

Geographical Area: All Beats
 Group by: Agency Select by: Neighborhood

Prior Report Number: S1STA120

Neighborhood	ROBBERY--		--- AGGRVD		VIOLENT		-----BURGLARY-----			---LARCENY-THEFT---			M.VEH PROPERTY		CRIME	CAR	
	MURDER	RAPE	RAPE (HISTORICAL)	ARMED	ST/ ARM	ASSAULT	CRM TL	RESID	NRESID	TOTAL	\$400+	<\$400	TOTAL	THEFT	CRM TL	IDX TL	PROWL

Agency = OCEANSIDE																	
AIRPORT	0	0	0	0	0	4	4	0	35	35	4	11	15	1	51	55	6
EASTSIDE/CAPISTRANO	0	0	0	1	1	13	15	7	5	12	13	15	28	5	45	60	14
FIRE MOUNTAIN	1	1	0	3	3	5	13	4	14	18	36	68	104	2	124	137	7
GUAJOME	0	2	2	0	0	11	13	4	1	5	23	23	46	2	53	66	10
IVEY RAN/RAN DEL ORO	0	5	2	0	3	23	31	11	13	24	28	45	73	16	113	144	35
IVY RAN/RAN DEL ORO	0	1	0	0	0	2	3	3	0	3	7	4	11	1	15	18	5
LAKE	0	2	1	1	2	12	17	2	8	10	20	35	55	1	66	83	9
MIRA COSTA	0	1	1	0	0	19	20	1	6	7	15	22	37	4	48	68	19
MISSN MESA/LOMA ALTA	0	1	1	1	2	11	15	7	16	23	30	45	75	8	106	121	34
MORRO HILLS	0	1	1	0	0	2	3	1	1	2	3	3	6	0	8	11	3
NORTH VALLEY	0	1	0	1	1	11	14	2	1	3	12	24	36	4	43	57	12
OCEAN HILLS	0	1	1	1	1	1	4	0	0	0	13	8	21	0	21	25	10
OCEANA	0	0	0	0	0	1	1	1	2	3	4	7	11	1	15	16	1
SAN LUIS REY	1	4	4	1	3	22	31	5	17	22	37	55	92	12	126	157	33
SOUTH OCEANSIDE	0	3	1	1	3	8	15	2	3	5	17	16	33	3	41	56	17
TOWNSITE	0	1	0	4	2	49	56	10	26	36	43	54	97	16	149	205	29
TRI CITY	1	1	1	0	0	9	11	2	1	3	7	12	19	1	23	34	11
UNKNOWN	0	0	0	0	0	0	0	0	0	0	0	1	1	0	1	1	0
SUB-TOTAL	3	25	15	14	21	203	266	62	149	211	312	448	760	77	1,048	1,314	255
GRAND TOTALS	3	25	15	14	21	203	266	62	149	211	312	448	760	77	1,048	1,314	255