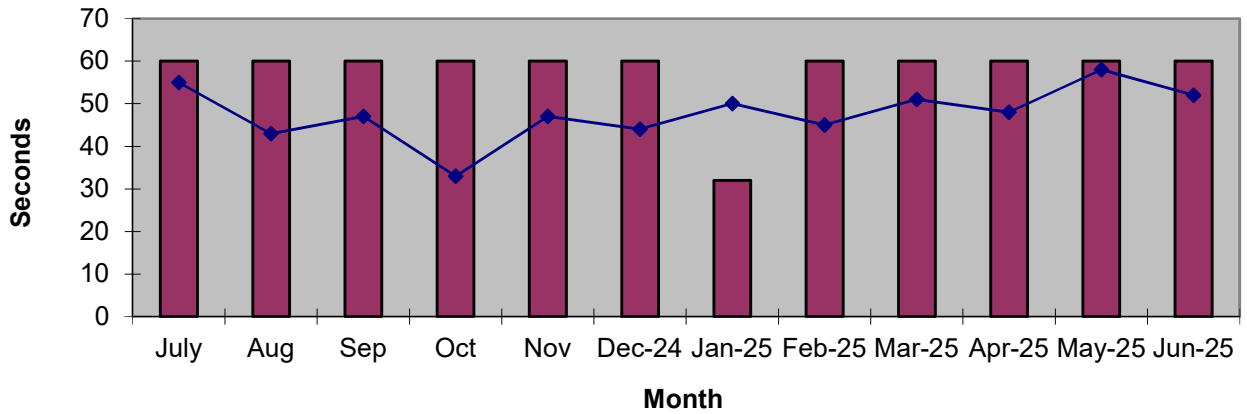
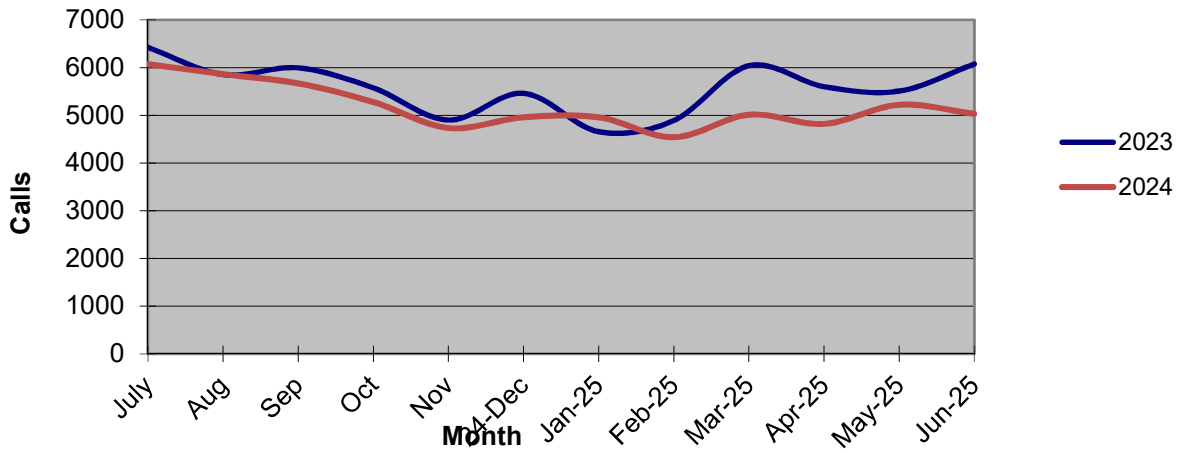


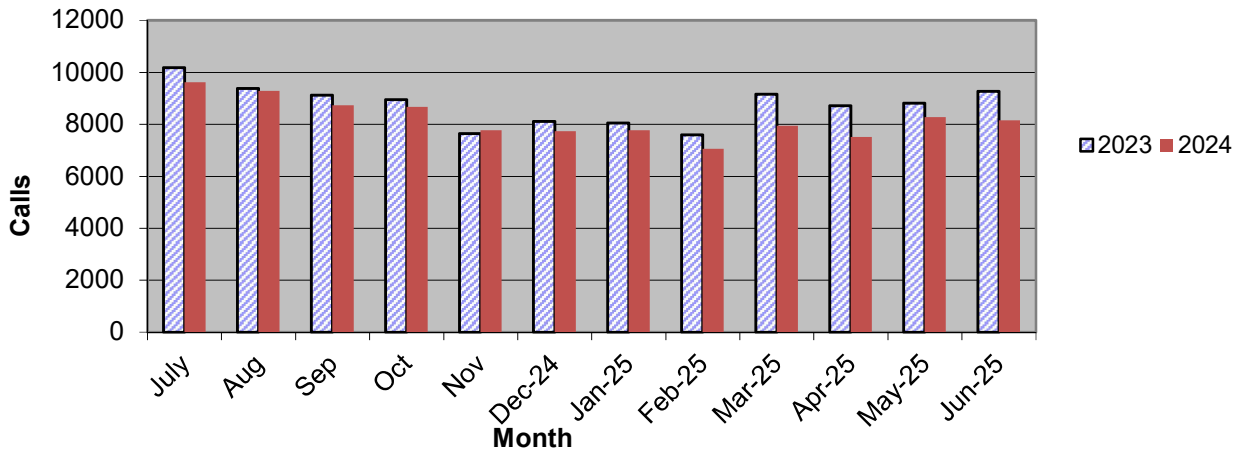
Priority 1 Dispatch Times- Police



911 Calls



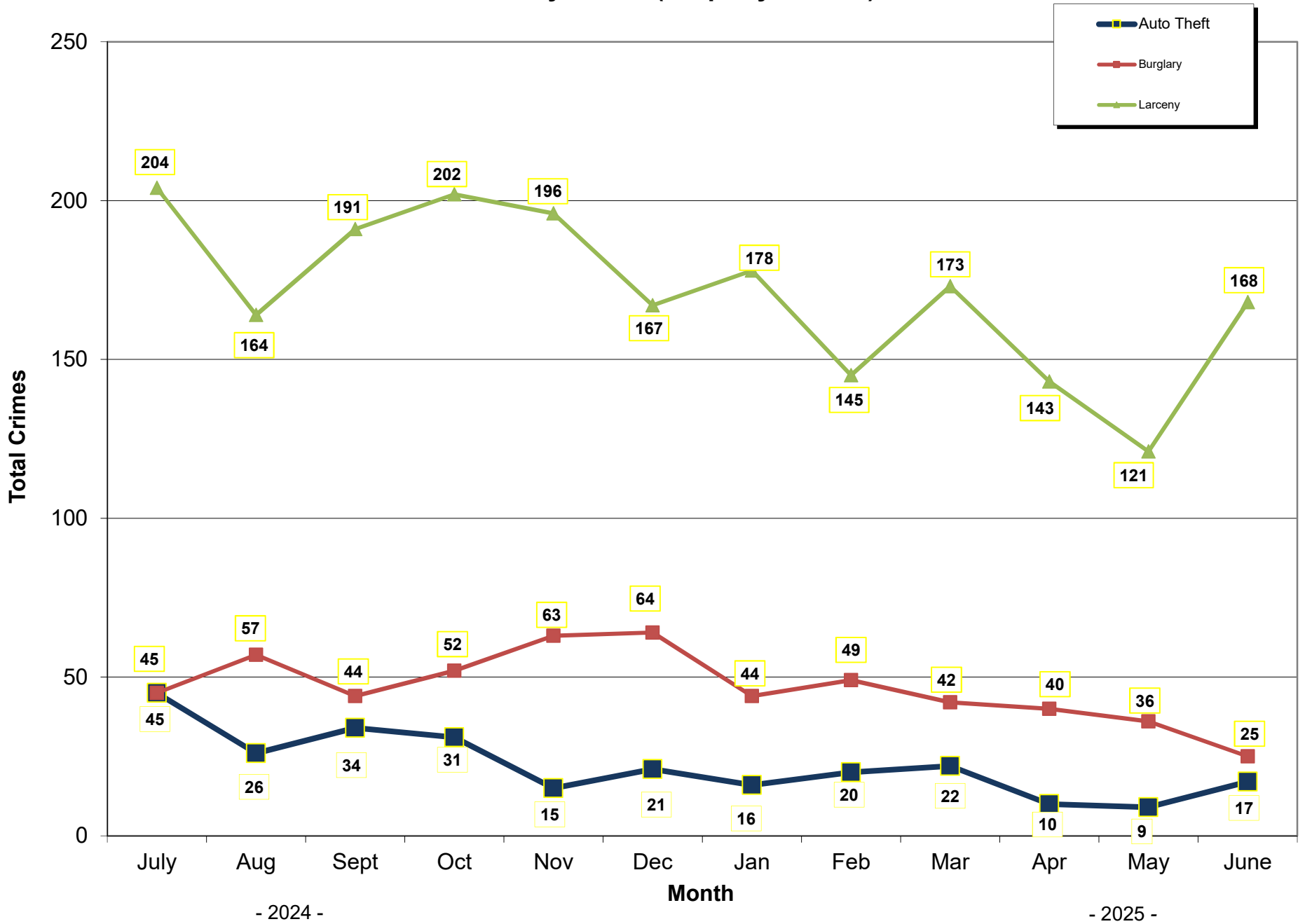
Calls for Service



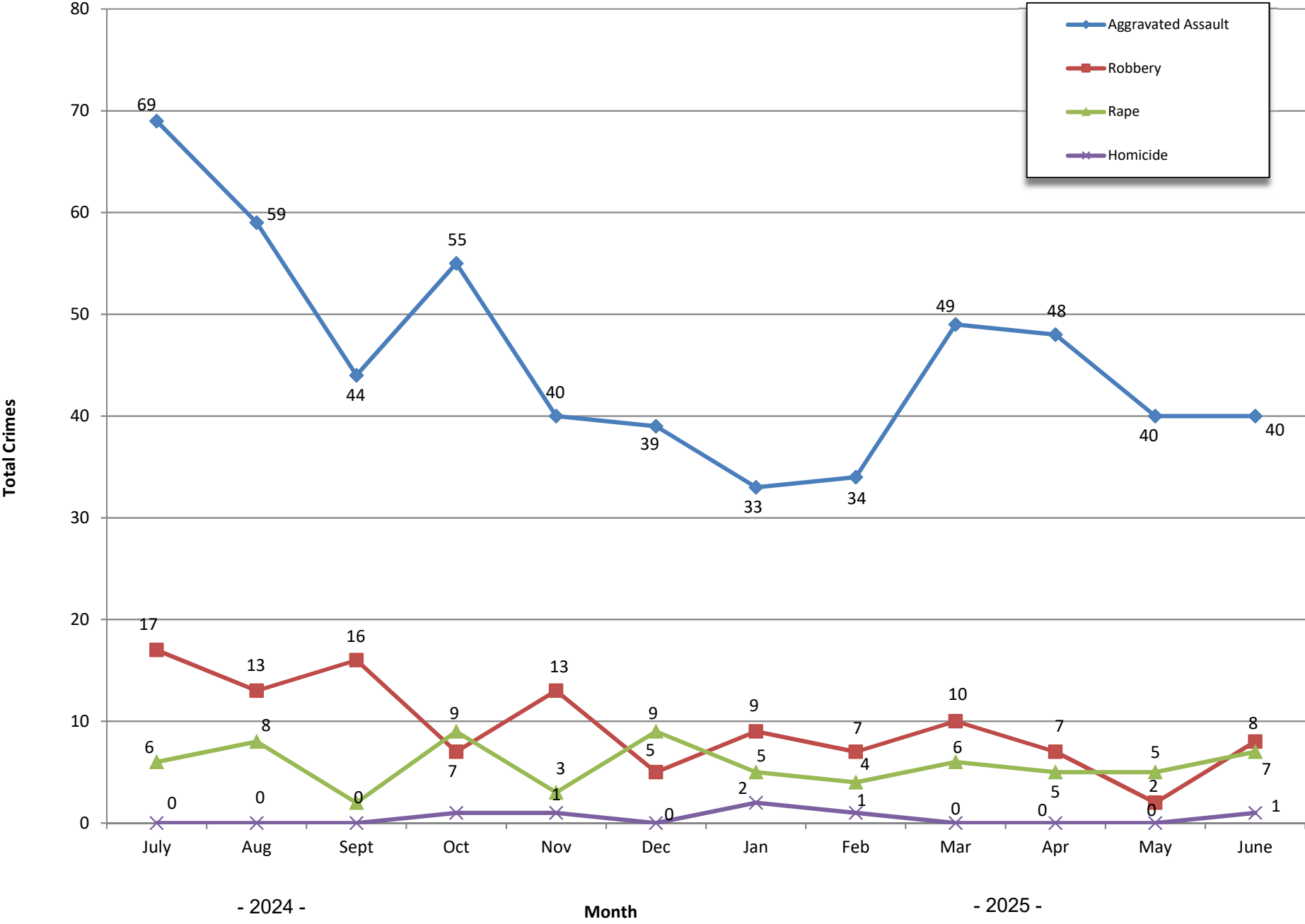
**OCEANSIDE POLICE DEPARTMENT
FBI INDEX CRIMES**

		MONTHLY CASE ACTIVITY 2025												YEAR TO DATE COMPARISON			
		JAN	FEB	MAR	APR	MAY	JUN	JUL	AUG	SEP	OCT	NOV	DEC	2024	2025	CHANGE	% CHANGE
1. HOMICIDE	Actual	2	1	0	0	0	1							1	4	3	300.0%
	Cleared	1	0	0	1	0	1							0	3	3	300.0%
2. RAPE	Actual	5	4	6	6	5	7							33	33	0	0.0%
	Cleared	0	0	1	1	0	2							2	4	2	100.0%
3. ROBBERY	Actual	9	7	10	10	2	8							76	46	-30	-39.5%
	Cleared	2	4	3	3	2	2							27	16	-11	-40.7%
4. AGGR. ASSAULT	Actual	33	33	49	49	40	40							283	244	-39	-13.8%
	Cleared	13	19	24	24	26	12							110	118	8	7.3%
5. BURGLARY	Actual	44	49	42	42	36	25							185	238	53	28.6%
	Cleared	3	5	6	6	3	2							19	25	6	31.6%
6. LARCENY THEFT	Actual	178	145	173	173	121	168							1056	958	-98	-9.3%
	Cleared	13	2	10	10	8	12							49	55	6	12.2%
7. AUTO THEFT	Actual	16	20	22	22	9	17							157	106	-51	-32.5%
	Cleared	1	1	3	3	0	0							7	8	1	14.3%
TOTAL INDEX CRIMES	Actual	287	259	302	302	213	266							1791	1629	-162	-9.0%
	Cleared	33	31	47	47	39	31							214	228	14	6.5%
TOTAL PERSON CRIMES	Actual	49	45	65	60	47	266							393	532	139	35.4%
	Cleared	16	23	28	23	28	17							139	135	-4	-2.9%
TOTAL PROPERTY CRIMES	Actual	238	214	195	193	166	210							1398	1216	-182	-13.0%
	Cleared	17	8	28	7	11	14							75	85	10	13.3%
ARSON	Actual	7	1	0	5	2	5							14	20	6	42.9%
Y-T-D Loss \$208,606	Cleared	4	1	0	2	1	1							9	9	0	0.0%

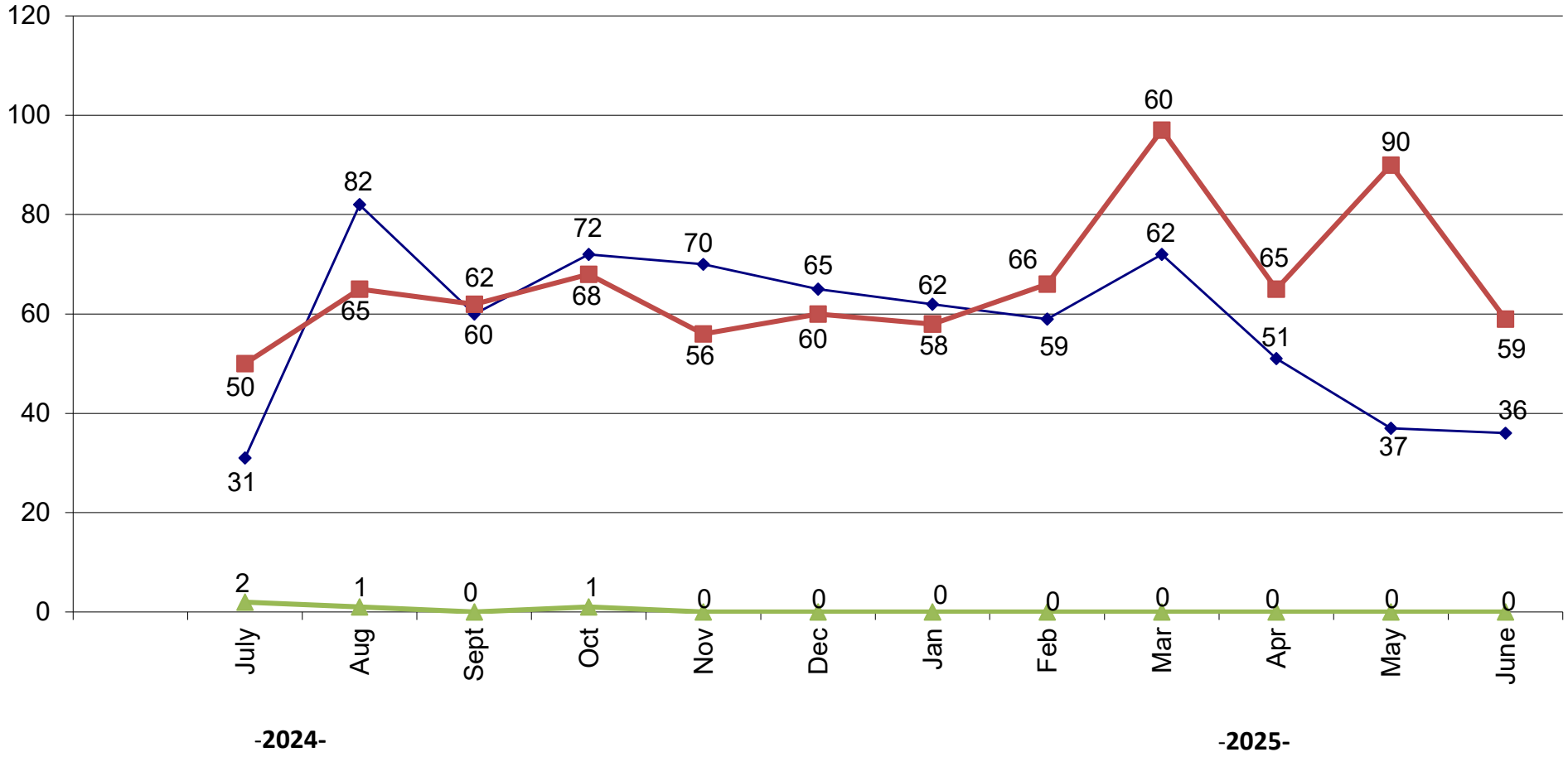
Part 1 Crimes by Month (Property Crimes) 2025



Part 1 Crimes by Month (Violent Crimes) 2025



Traffic Collisions 2025





UCR Crimes by GeoArea

Required Parameters

Reporting Period: Jun 2025
 Agency: OCEANSIDE

Optional Parameters

Geographical Area: All Beats
 Group by: Agency Select by: Neighborhood

Prior Report Number: S1STA120

Neighborhood	ROBBERY--		--- AGGRVD		VIOLENT		-----BURGLARY-----			---LARCENY-THEFT---			M.VEH PROPERTY		CRIME		CAR
	MURDER	RAPE	RAPE (HISTORICAL)	ARMED	ST/ ARM	ASSAULT	CRM TL	RESID	NRESID	TOTAL	\$400+	<\$400	TOTAL	THEFT	CRM TL	IDX TL	PROWL

Agency = OCEANSIDE																	
AIRPORT	0	1	1	0	0	2	3	0	1	1	1	3	4	0	5	8	2
EASTSIDE/CAPISTRANO	0	2	0	0	0	4	6	1	0	1	1	4	5	1	7	13	3
FIRE MOUNTAIN	0	0	0	0	1	1	2	1	1	2	14	13	27	1	30	32	3
GUAJOME	0	1	1	0	0	1	2	0	3	3	5	1	6	0	9	11	3
IVEY RAN/RAN DEL ORO	0	0	0	0	0	0	0	0	3	3	7	8	15	2	20	20	7
IVY RAN/RAN DEL ORO	0	0	0	0	1	0	1	0	0	0	1	1	2	0	2	3	0
LAKE	0	0	0	2	0	2	4	0	1	1	4	10	14	1	16	20	3
MIRA COSTA	0	0	0	0	0	4	4	1	1	2	4	1	5	0	7	11	2
MISSN MESA/LOMA ALTA	1	1	0	1	0	5	8	1	1	2	6	7	13	2	17	25	4
MORRO HILLS	0	0	0	0	0	0	0	1	0	1	2	2	4	0	5	5	1
NORTH VALLEY	0	0	0	0	0	5	5	0	0	0	4	2	6	1	7	12	2
OCEAN HILLS	0	0	0	0	0	1	1	0	0	0	3	3	6	0	6	7	2
OCEANA	0	0	0	0	0	0	0	0	0	0	1	0	1	0	1	1	0
SAN LUIS REY	0	0	0	0	0	4	4	4	1	5	5	13	18	1	24	28	6
SOUTH OCEANSIDE	0	0	0	0	0	1	1	0	0	0	5	3	8	1	9	10	3
TOWNSITE	0	2	2	0	3	10	15	3	1	4	14	13	27	7	38	53	7
TRI CITY	0	0	0	0	0	0	0	0	0	0	2	2	4	0	4	4	1
UNKNOWN	0	0	0	0	0	0	0	0	0	0	2	1	3	0	3	3	0
SUB-TOTAL	1	7	4	3	5	40	56	12	13	25	81	87	168	17	210	266	49
GRAND TOTALS	1	7	4	3	5	40	56	12	13	25	81	87	168	17	210	266	49



UCR Crimes by GeoArea

Required Parameters

Reporting Period: Jan 2025 to Jun 2025
Agency: OCEANSIDE

Optional Parameters

Geographical Area: All Beats
Group by: Agency Select by: Neighborhood

Prior Report Number: S1STA120

Neighborhood	ROBBERY--		--- AGGRVD		VIOLENT		-----BURGLARY-----			---LARCENY-THEFT---			M.VEH PROPERTY		CRIME	CAR	
	MURDER	RAPE	RAPE (HISTORICAL)	ARMED	ST/ ARM	ASSAULT	CRM TL	RESID	NRESID	TOTAL	\$400+	<\$400	TOTAL	THEFT	CRM TL	IDX TL	PROWL
Agency = OCEANSIDE																	
AIRPORT	0	1	1	0	0	6	7	0	36	36	5	14	19	1	56	63	8
EASTSIDE/CAPISTRANO	0	2	0	1	1	17	21	8	5	13	14	19	33	6	52	73	17
FIRE MOUNTAIN	1	1	0	3	4	6	15	5	15	20	50	81	131	3	154	169	10
GUAJOME	0	3	3	0	0	12	15	4	4	8	28	24	52	2	62	77	13
IVEY RAN/RAN DEL ORO	0	5	2	0	3	23	31	11	16	27	35	53	88	18	133	164	42
IVY RAN/RAN DEL ORO	0	1	0	0	1	2	4	3	0	3	8	5	13	1	17	21	5
LAKE	0	2	1	3	2	14	21	2	9	11	24	45	69	2	82	103	12
MIRA COSTA	0	1	1	0	0	23	24	2	7	9	19	23	42	4	55	79	21
MISSN MESA/LOMA ALTA	1	2	1	2	2	16	23	8	17	25	36	52	88	10	123	146	38
MORRO HILLS	0	1	1	0	0	2	3	2	1	3	5	5	10	0	13	16	4
NORTH VALLEY	0	1	0	1	1	16	19	2	1	3	16	26	42	5	50	69	14
OCEAN HILLS	0	1	1	1	1	2	5	0	0	0	16	11	27	0	27	32	12
OCEANA	0	0	0	0	0	1	1	1	2	3	5	7	12	1	16	17	1
SAN LUIS REY	1	4	4	1	3	26	35	9	18	27	42	68	110	13	150	185	39
SOUTH OCEANSIDE	0	3	1	1	3	9	16	2	3	5	22	19	41	4	50	66	20
TOWNSITE	0	3	2	4	5	59	71	13	27	40	57	67	124	23	187	258	36
TRI CITY	1	1	1	0	0	9	11	2	1	3	9	14	23	1	27	38	12
UNKNOWN	0	0	0	0	0	0	0	0	0	0	2	2	4	0	4	4	0
SUB-TOTAL	4	32	19	17	26	243	322	74	162	236	393	535	928	94	1,258	1,580	304
GRAND TOTALS	4	32	19	17	26	243	322	74	162	236	393	535	928	94	1,258	1,580	304