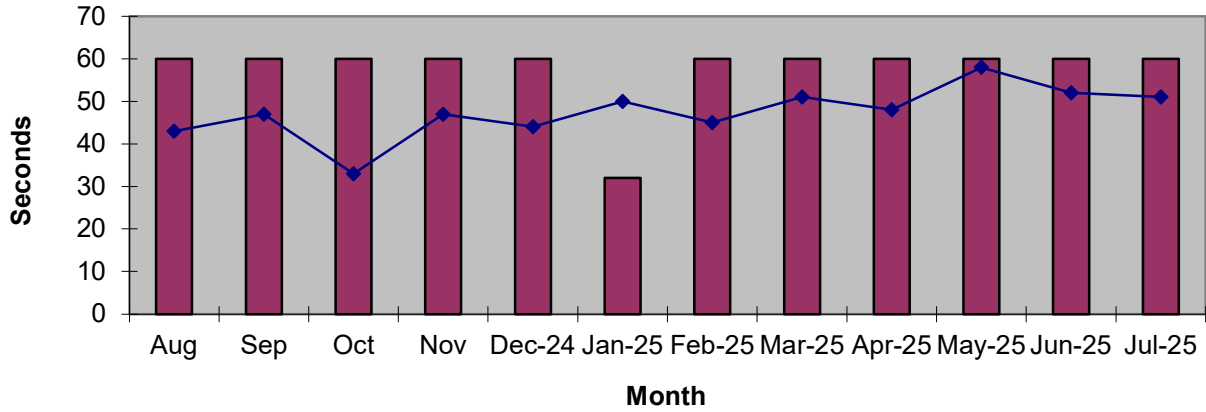
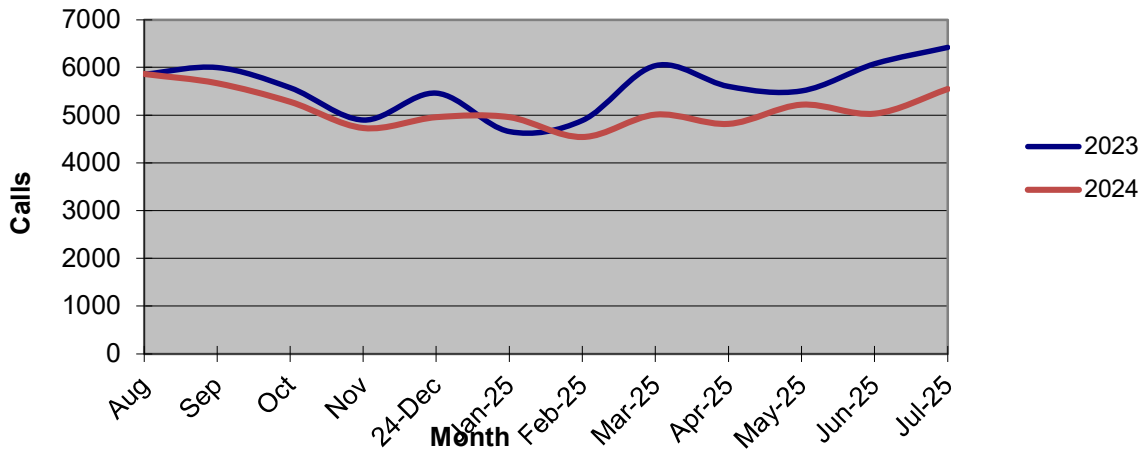


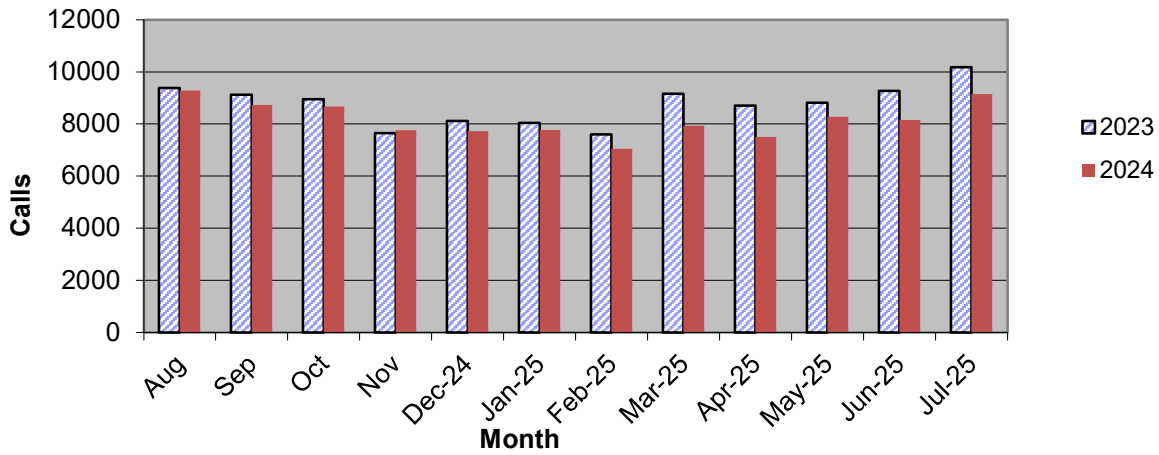
Priority 1 Dispatch Times- Police



911 Calls



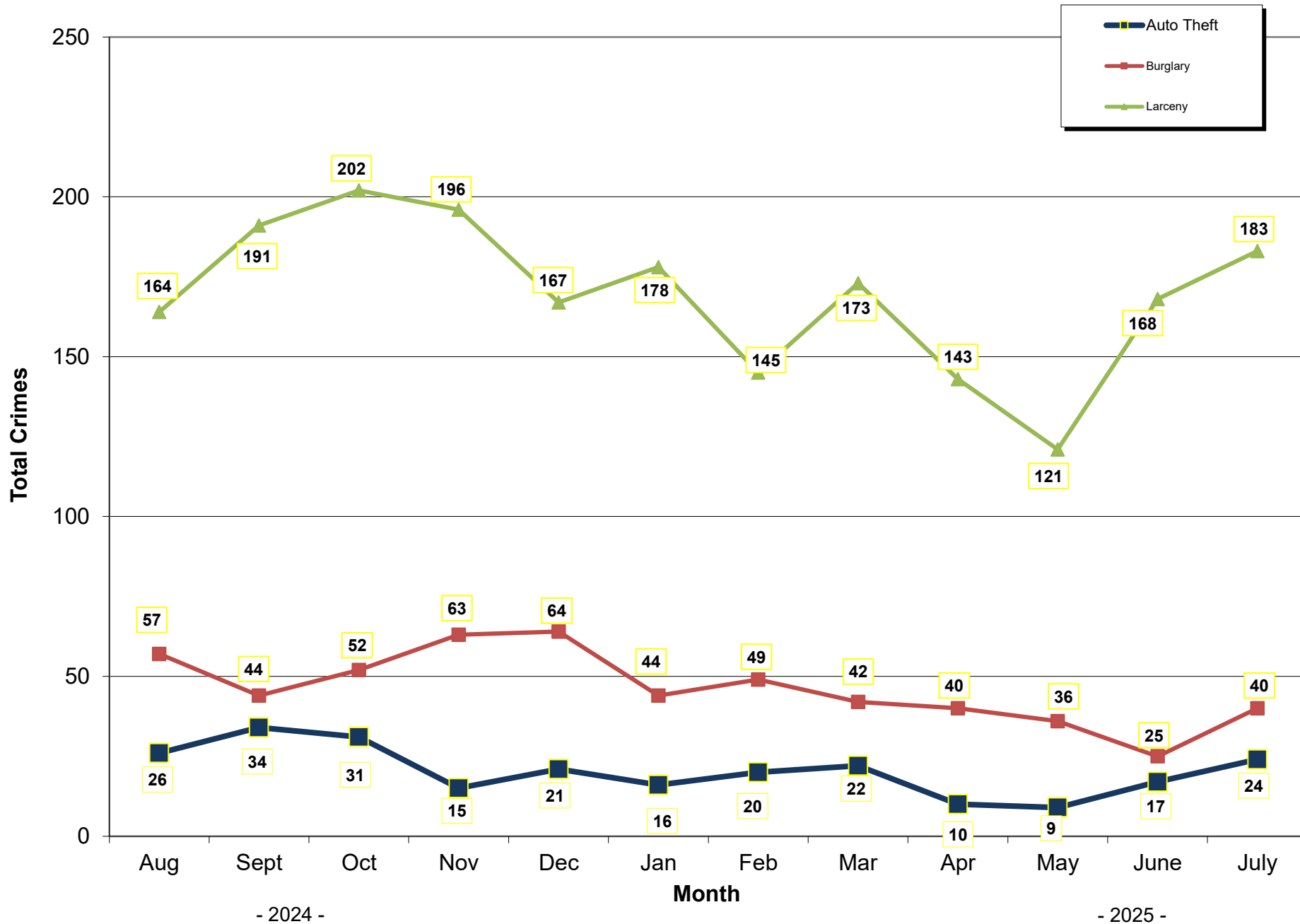
Calls for Service



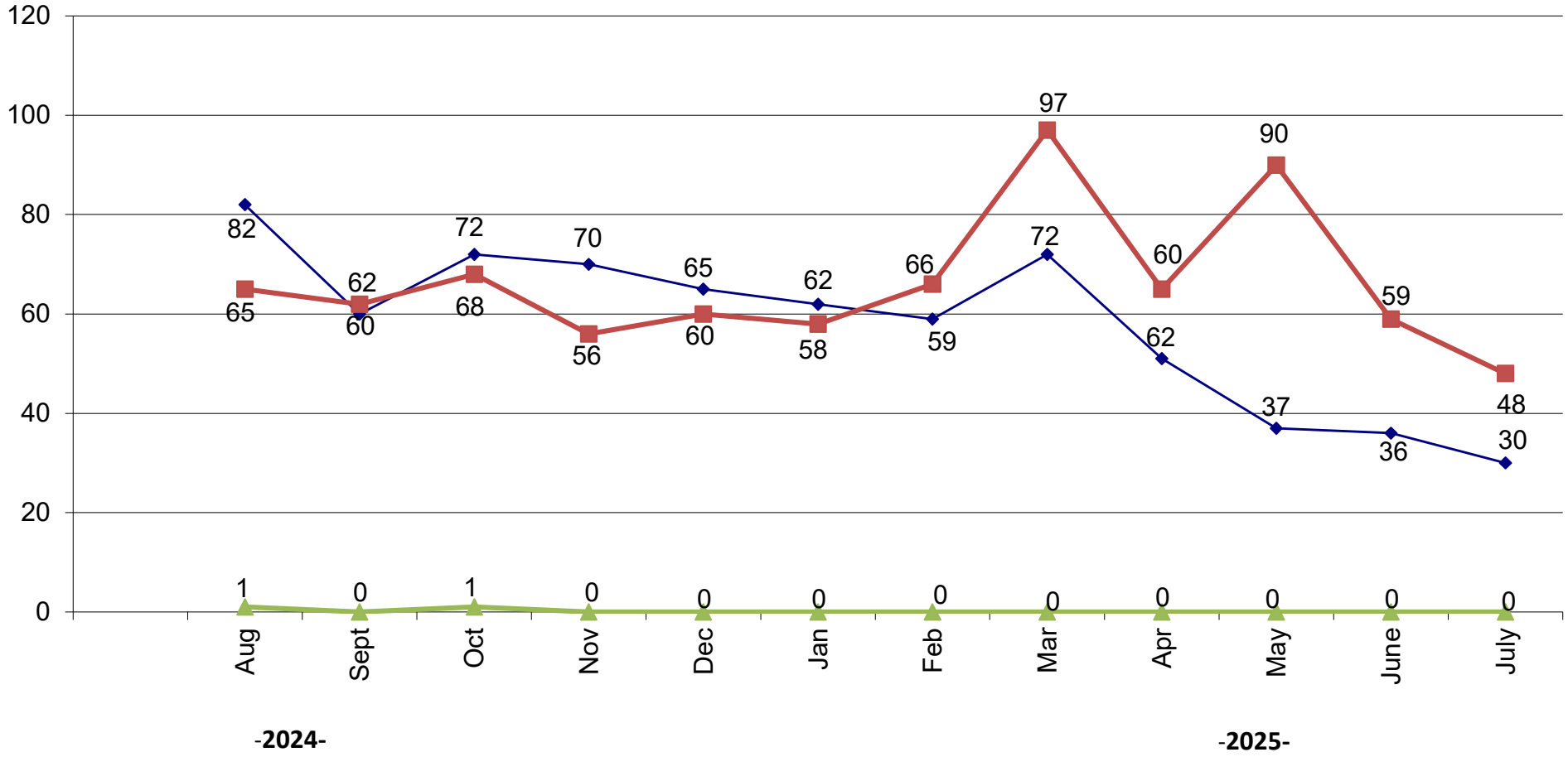
**OCEANSIDE POLICE DEPARTMENT
FBI INDEX CRIMES**

		MONTHLY CASE ACTIVITY 2025												YEAR TO DATE COMPARISON			
		JAN	FEB	MAR	APR	MAY	JUN	JUL	AUG	SEP	OCT	NOV	DEC	2024	2025	CHANGE	% CHANGE
1. HOMICIDE	Actual	2	1	0	0	0	1	1						1	5	4	400.0%
	Cleared	1	0	0	1	0	1	0						0	3	3	300.0%
2. RAPE	Actual	5	4	6	6	5	7	5						39	38	-1	-2.6%
	Cleared	0	0	1	1	0	2	0						2	4	2	100.0%
3. ROBBERY	Actual	9	7	10	10	2	8	11						93	57	-36	-38.7%
	Cleared	2	4	3	3	2	2	3						36	19	-17	-47.2%
4. AGGR. ASSAULT	Actual	33	33	49	49	40	40	38						352	282	-70	-19.9%
	Cleared	13	19	24	24	26	12	22						141	140	-1	-0.7%
5. BURGLARY	Actual	44	49	42	42	36	25	40						230	278	48	20.9%
	Cleared	3	5	6	6	3	2	3						27	28	1	3.7%
6. LARCENY THEFT	Actual	178	145	173	173	121	168	183						1260	1141	-119	-9.4%
	Cleared	13	2	10	10	8	12	11						57	66	9	15.8%
7. AUTO THEFT	Actual	16	20	22	22	9	17	24						202	130	-72	-35.6%
	Cleared	1	1	3	3	0	0	1						13	9	-4	-30.8%
TOTAL INDEX CRIMES	Actual	287	259	302	302	213	266	302						2204	1931	-273	-12.4%
	Cleared	33	31	47	47	39	31	43						311	271	-40	-12.9%
TOTAL PERSON CRIMES	Actual	49	45	65	60	47	56	55						277	377	100	36.1%
	Cleared	16	23	28	23	28	17	28						130	163	33	25.4%
TOTAL PROPERTY CRIMES	Actual	238	214	195	193	166	210	247						1762	1463	-299	-17.0%
	Cleared	17	8	28	7	11	14	15						85	100	15	17.6%
ARSON	Actual	7	1	0	5	2	5	4						18	24	6	33.3%
Y-T-D Loss \$208,706	Cleared	4	1	0	2	1	1	0						7	9	2	28.6%

Part 1 Crimes by Month (Property Crimes) 2025



Traffic Collisions 2025





UCR Crimes by GeoArea

Required Parameters

Reporting Period: Jul 2025
Agency: OCEANSIDE

Optional Parameters

Geographical Area: All Beats
Group by: Agency Select by: Neighborhood

Prior Report Number: S1STA120

Neighborhood	ROBBERY--					--- AGGRVD	VIOLENT	-----BURGLARY-----			---LARCENY-THEFT---			M.VEH	PROPERTY	CRIME	CAR
	MURDER	RAPE	RAPE (HISTORICAL)	ARMED	ST/ ARM	ASSAULT	CRM TL	RESID	NRESID	TOTAL	\$400+	<\$400	TOTAL	THEFT	CRM TL	IDX TL	PROWL
Agency = OCEANSIDE																	
AIRPORT	0	1	1	0	-1	1	1	0	0	0	0	1	1	1	2	3	1
EASTSIDE/CAPISTRANO	0	0	0	0	0	2	2	0	1	1	4	3	7	0	8	10	6
FIRE MOUNTAIN	0	0	0	1	2	0	3	0	1	1	11	16	27	1	29	32	3
GUAJOME	0	0	0	0	0	0	0	1	0	1	6	2	8	2	11	11	4
IVEY RAN/RAN DEL ORO	0	1	1	0	0	2	3	1	3	4	8	7	15	5	24	27	6
IVY RAN/RAN DEL ORO	0	0	0	0	0	2	2	0	0	0	4	1	5	1	6	8	2
LAKE	0	0	0	0	1	3	4	2	3	5	3	6	9	0	14	18	2
MIRA COSTA	1	0	0	0	0	2	3	2	0	2	7	2	9	0	11	14	4
MISSN MESA/LOMA ALTA	0	1	1	2	2	3	8	2	2	4	3	2	5	2	11	19	4
MORRO HILLS	0	0	0	0	0	3	3	0	1	1	1	0	1	0	2	5	0
NORTH VALLEY	0	0	0	0	0	1	1	0	0	0	3	5	8	3	11	12	4
OCEAN HILLS	0	0	0	0	0	0	0	1	0	1	4	3	7	0	8	8	2
OCEANA	0	0	0	0	0	2	2	0	2	2	2	1	3	1	6	8	1
SAN LUIS REY	0	0	0	0	0	2	2	3	3	6	7	9	16	2	24	26	6
SOUTH OCEANSIDE	0	2	2	0	0	3	5	2	0	2	2	6	8	2	12	17	6
TOWNSITE	0	0	0	1	1	10	12	6	4	10	22	19	41	4	55	67	14
TRI CITY	0	0	0	1	1	2	4	0	0	0	5	6	11	0	11	15	7
UNKNOWN	0	0	0	0	0	0	0	0	0	0	2	0	2	0	2	2	1
SUB-TOTAL	1	5	5	5	6	38	55	20	20	40	94	89	183	24	247	302	73
GRAND TOTALS	1	5	5	5	6	38	55	20	20	40	94	89	183	24	247	302	73



UCR Crimes by GeoArea

Required Parameters

Reporting Period: Jan 2025 to Jul 2025
 Agency: OCEANSIDE

Optional Parameters

Geographical Area: All Beats
 Group by: Agency Select by: Neighborhood

Prior Report Number: S1STA120

Neighborhood	ROBBERY--		--- AGGRVD		VIOLENT		-----BURGLARY-----			---LARCENY-THEFT---			M.VEH PROPERTY		CRIME	CAR	
	MURDER	RAPE	RAPE (HISTORICAL)	ARMED	ST/ ARM	ASSAULT	CRM TL	RESID	NRESID	TOTAL	\$400+	<\$400	TOTAL	THEFT	CRM TL	IDX TL	PROWL
Agency = OCEANSIDE																	
AIRPORT	0	2	2	0	-1	7	8	0	36	36	5	15	20	2	58	66	9
EASTSIDE/CAPISTRANO	0	2	0	1	1	19	23	8	6	14	18	22	40	6	60	83	23
FIRE MOUNTAIN	1	1	0	4	6	6	18	5	16	21	61	97	158	4	183	201	13
GUAJOME	0	3	3	0	0	12	15	5	4	9	34	26	60	4	73	88	17
IVEY RAN/RAN DEL ORO	0	6	3	0	3	25	34	12	19	31	43	60	103	23	157	191	48
IVY RAN/RAN DEL ORO	0	1	0	0	1	4	6	3	0	3	12	6	18	2	23	29	7
LAKE	0	2	1	3	3	17	25	4	12	16	27	51	78	2	96	121	14
MIRA COSTA	1	1	1	0	0	25	27	4	7	11	26	25	51	4	66	93	25
MISSN MESA/LOMA ALTA	1	3	2	4	4	19	31	10	19	29	39	54	93	12	134	165	42
MORRO HILLS	0	1	1	0	0	5	6	2	2	4	6	5	11	0	15	21	4
NORTH VALLEY	0	1	0	1	1	17	20	2	1	3	19	31	50	8	61	81	18
OCEAN HILLS	0	1	1	1	1	2	5	1	0	1	20	14	34	0	35	40	14
OCEANA	0	0	0	0	0	3	3	1	4	5	7	8	15	2	22	25	2
SAN LUIS REY	1	4	4	1	3	28	37	12	21	33	49	77	126	15	174	211	45
SOUTH OCEANSIDE	0	5	3	1	3	12	21	4	3	7	24	25	49	6	62	83	26
TOWNSITE	0	3	2	5	6	69	83	19	31	50	79	86	165	27	242	325	50
TRI CITY	1	1	1	1	1	11	15	2	1	3	14	20	34	1	38	53	19
UNKNOWN	0	0	0	0	0	0	0	0	0	0	4	2	6	0	6	6	1
SUB-TOTAL	5	37	24	22	32	281	377	94	182	276	487	624	1,111	118	1,505	1,882	377
GRAND TOTALS	5	37	24	22	32	281	377	94	182	276	487	624	1,111	118	1,505	1,882	377