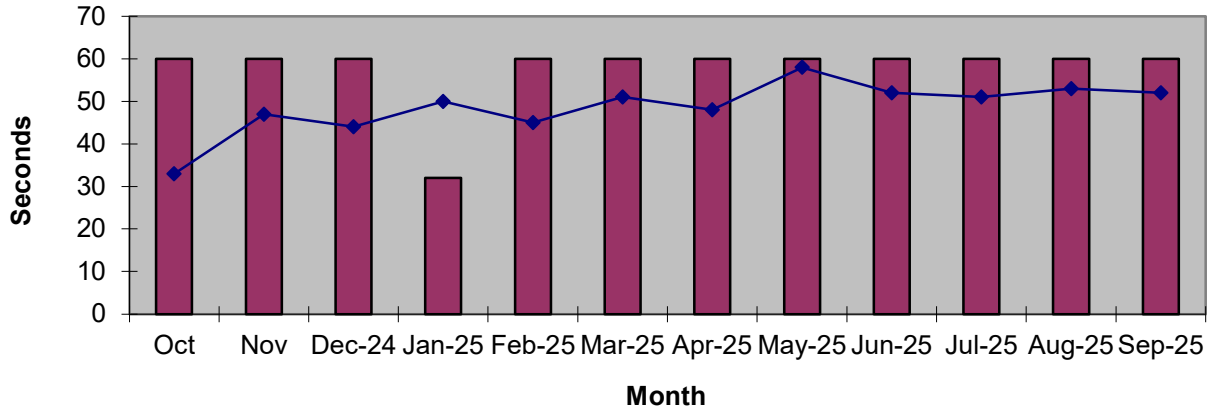
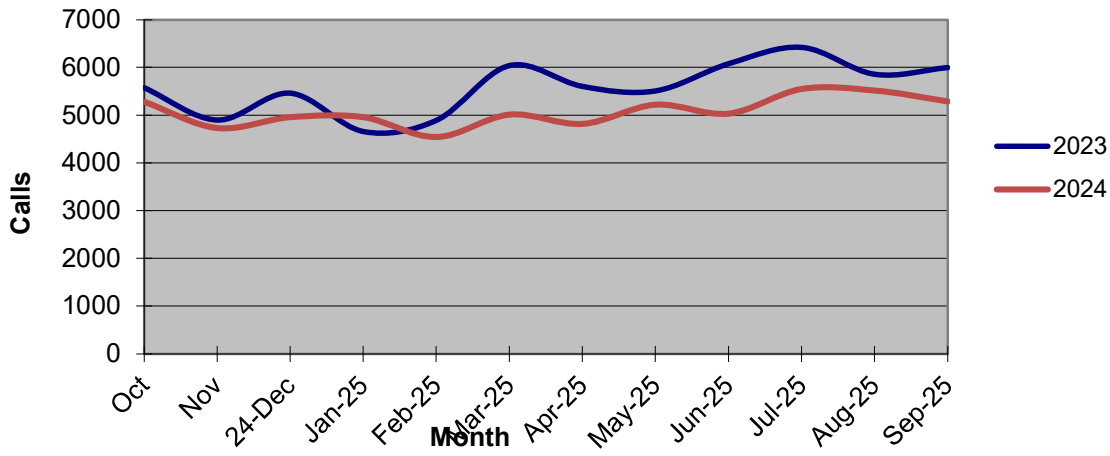


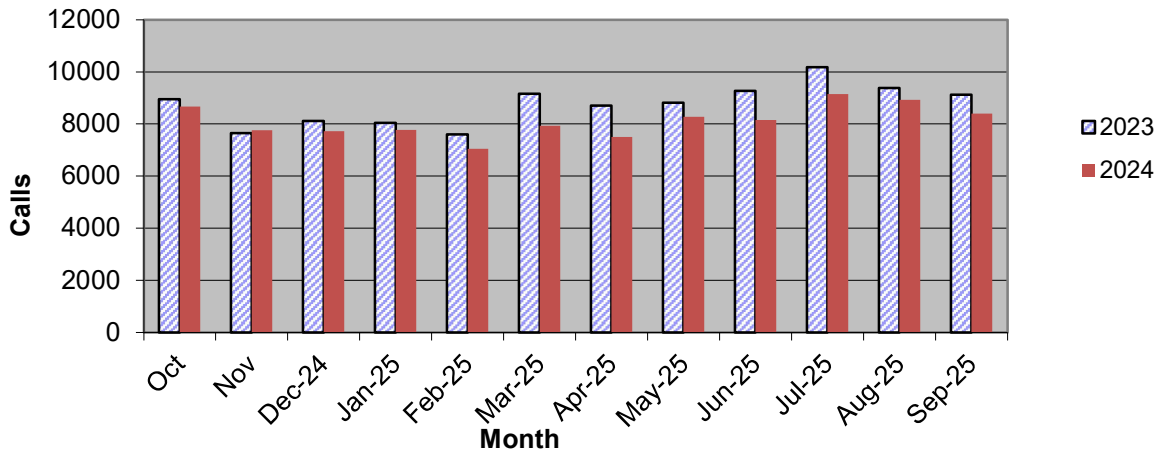
Priority 1 Dispatch Times- Police



911 Calls



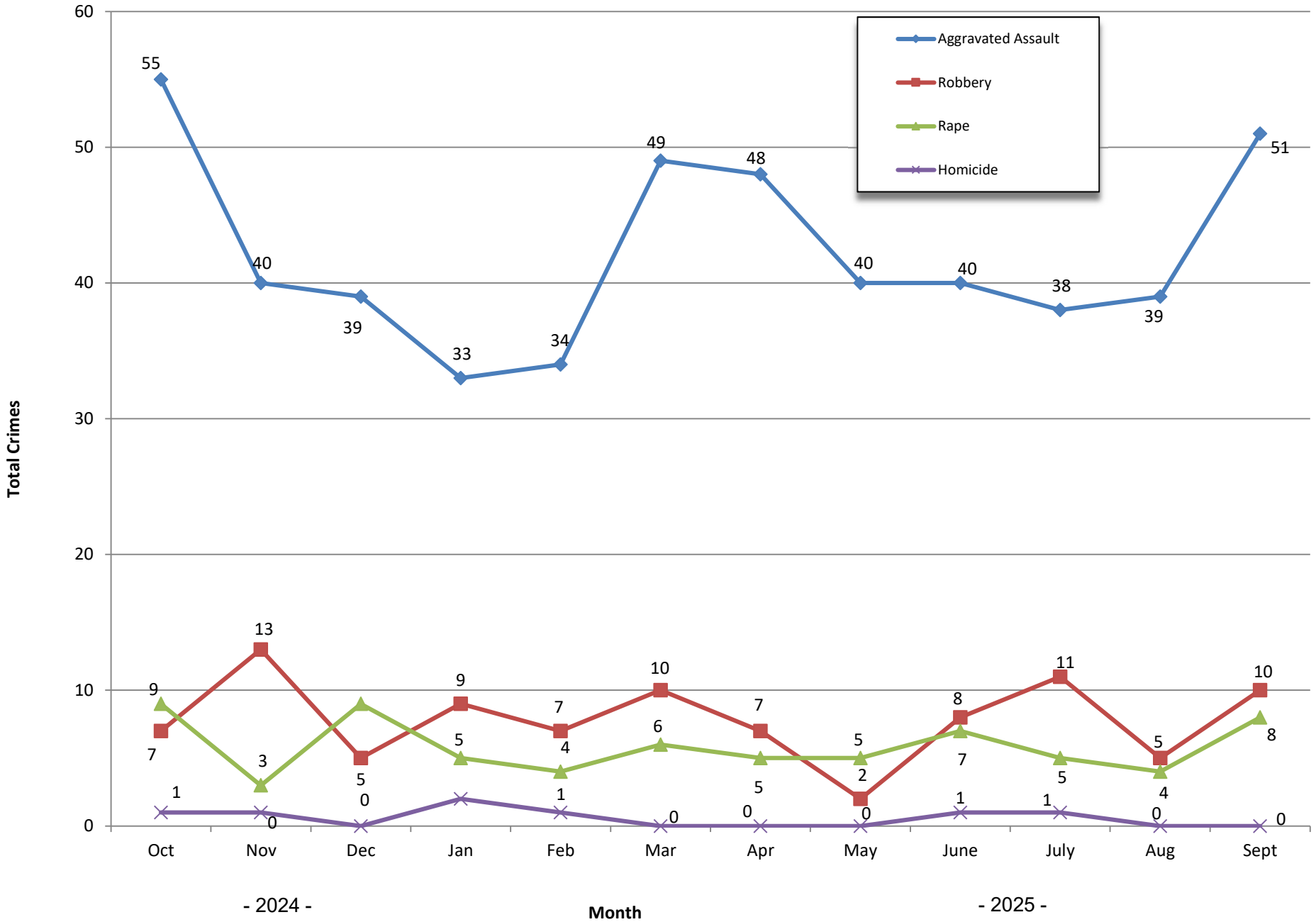
Calls for Service



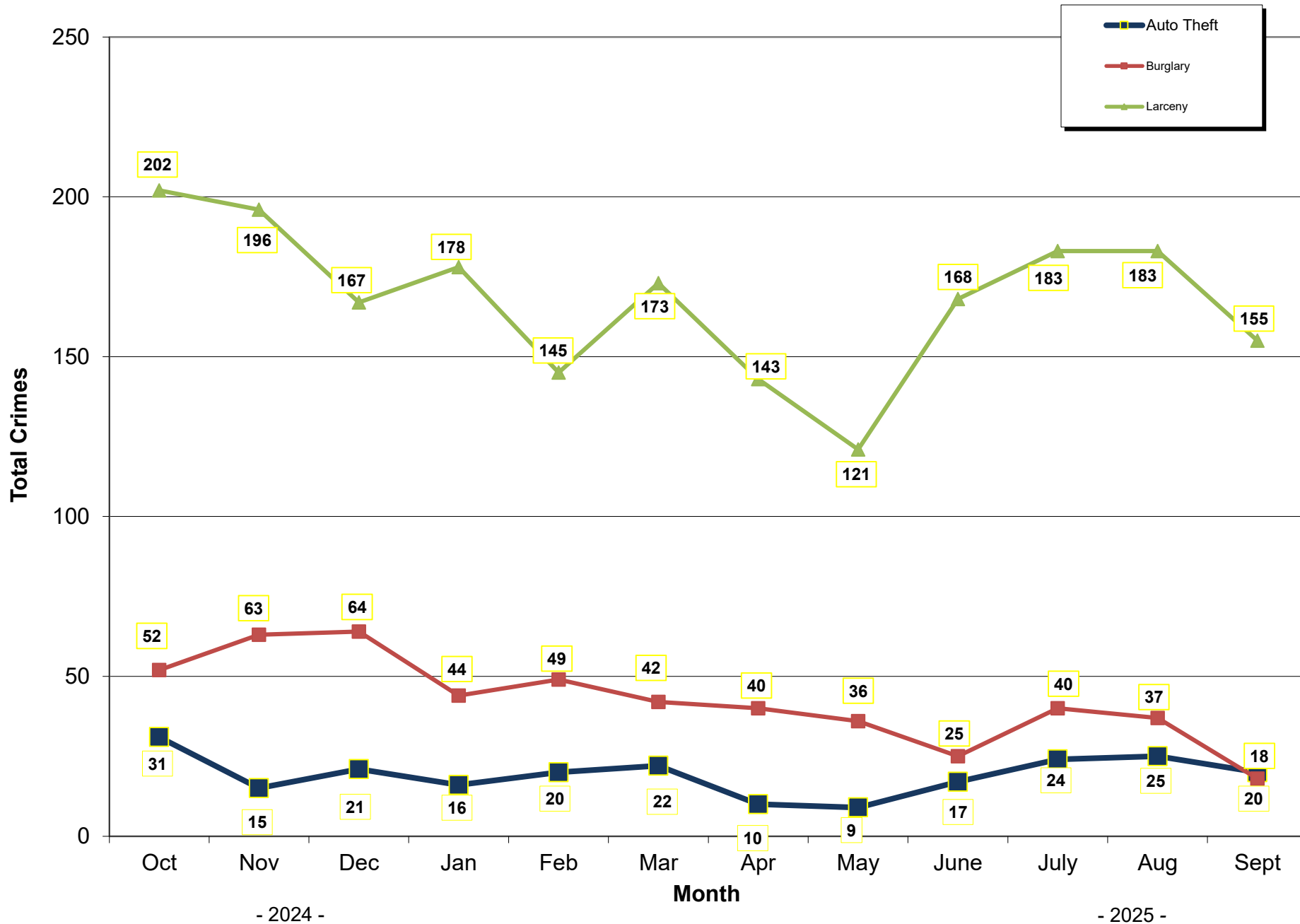
OCEANSIDE POLICE DEPARTMENT FBI INDEX CRIMES

		MONTHLY CASE ACTIVITY 2025											YEAR TO DATE COMPARISON			% CHANGE	
		JAN	FEB	MAR	APR	MAY	JUN	JUL	AUG	SEP	OCT	NOV	DEC	2024	2025		CHANGE
1. HOMICIDE	Actual	2	1	0	0	0	1	1	0	0				1	5	4	400.0%
	Cleared	1	0	0	1	0	1	0	0	0				1	3	2	200.0%
2. RAPE	Actual	5	4	6	6	5	7	5	4	8				49	50	1	2.0%
	Cleared	0	0	1	1	0	2	0	2	1				3	7	4	133.3%
3. ROBBERY	Actual	9	7	10	10	2	8	11	5	10				122	72	-50	-41.0%
	Cleared	2	4	3	3	2	2	3	5	4				50	28	-22	-44.0%
4. AGGR. ASSAULT	Actual	33	33	49	49	40	40	38	39	51				455	372	-83	-18.2%
	Cleared	13	19	24	24	26	12	22	20	24				185	184	-1	-0.5%
5. BURGLARY	Actual	44	49	42	42	36	25	40	37	18				331	333	2	0.6%
	Cleared	3	5	6	6	3	2	3	5	1				38	34	-4	-10.5%
6. LARCENY THEFT	Actual	178	145	173	173	121	168	183	183	155				1615	1479	-136	-8.4%
	Cleared	13	2	10	10	8	12	11	8	11				72	85	13	18.1%
7. AUTO THEFT	Actual	16	20	22	22	9	17	24	25	20				262	175	-87	-33.2%
	Cleared	1	1	3	3	0	0	1	2	0				17	11	-6	-35.3%
TOTAL INDEX CRIMES	Actual	287	259	302	302	213	266	302	292	331				2835	2554	-281	-9.9%
	Cleared	33	31	47	47	39	31	43	42	44				366	357	-9	-2.5%
TOTAL PERSON CRIMES	Actual	49	45	65	60	47	56	55	48	69				627	494	-133	-21.2%
	Cleared	16	23	28	23	28	17	28	27	29				239	219	-20	-8.4%
TOTAL PROPERTY CRIMES	Actual	238	214	195	193	166	210	247	245	193				2208	1901	-307	-13.9%
	Cleared	17	8	28	7	11	14	15	15	12				127	127	0	0.0%
ARSON	Actual	7	1	0	5	2	5	4	3	6				19	33	14	73.7%
	Y-T-D Loss \$209,217	4	1	0	2	1	1	0	1	2				10	12	2	20.0%

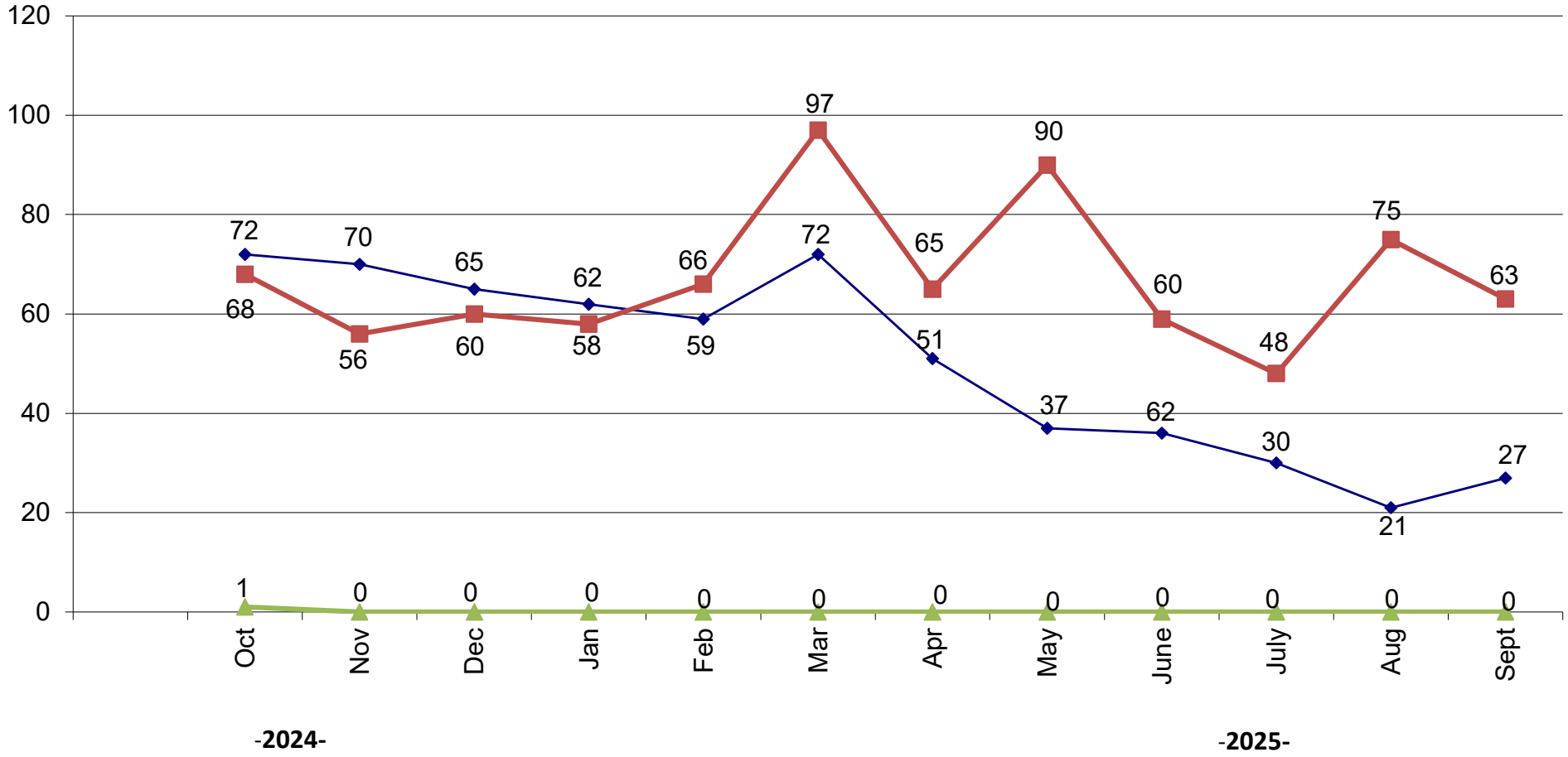
Part 1 Crimes by Month (Violent Crimes) 2025



Part 1 Crimes by Month (Property Crimes) 2025



Traffic Collisions 2025





UCR Crimes by GeoArea

Required Parameters

Reporting Period: Sep 2025
 Agency: OCEANSIDE

Optional Parameters

Geographical Area: All Beats
 Group by: Agency Select by: Neighborhood

Prior Report Number: S1STA120

Neighborhood	ROBBERY--		--- AGGRVD		VIOLENT		-----BURGLARY-----			---LARCENY-THEFT---			M.VEH PROPERTY		CRIME	CAR	
	MURDER	RAPE	RAPE (HISTORICAL)	ARMED	ST/ ARM	ASSAULT	CRM TL	RESID	NRESID	TOTAL	\$400+	<\$400	TOTAL	THEFT	CRM TL	IDX TL	PROWL
Agency = OCEANSIDE																	
AIRPORT	0	0	0	0	0	2	2	0	1	1	0	2	2	0	3	5	1
EASTSIDE/CAPISTRANO	0	0	0	0	0	2	2	0	0	0	2	2	4	0	4	6	2
FIRE MOUNTAIN	0	0	0	0	0	1	1	0	1	1	17	8	25	2	28	29	3
GUAJOME	0	0	0	0	0	6	6	0	0	0	6	7	13	1	14	20	5
IVEY RAN/RAN DEL ORO	0	0	0	1	0	1	2	0	2	2	7	8	15	4	21	23	3
IVY RAN/RAN DEL ORO	0	0	0	0	0	0	0	0	0	0	3	1	4	0	4	4	0
LAKE	0	0	0	1	0	0	1	0	0	0	2	2	4	0	4	5	0
MIRA COSTA	0	0	0	0	0	4	4	2	3	5	3	2	5	1	11	15	3
MISSN MESA/LOMA ALTA	0	0	0	0	1	3	4	0	1	1	5	6	11	0	12	16	8
MORRO HILLS	0	0	0	-1	0	1	0	1	0	1	0	3	3	0	4	4	1
NORTH VALLEY	0	1	1	2	0	1	4	2	0	2	3	0	3	0	5	9	0
OCEAN HILLS	0	0	0	0	0	2	2	0	0	0	0	1	1	0	1	3	0
OCEANA	0	0	0	0	0	0	0	0	0	0	0	2	2	0	2	2	0
SAN LUIS REY	0	0	0	1	1	4	6	0	4	4	7	9	16	3	23	29	4
SOUTH OCEANSIDE	0	1	1	0	0	2	3	0	1	1	5	3	8	2	11	14	3
TOWNSITE	0	5	5	1	3	20	29	0	0	0	17	16	33	6	39	68	7
TRI CITY	0	0	0	0	0	2	2	0	0	0	0	1	1	1	2	4	0
UNKNOWN	0	1	1	0	0	0	1	0	0	0	1	4	5	0	5	6	0
SUB-TOTAL	0	8	8	5	5	51	69	5	13	18	78	77	155	20	193	262	40
GRAND TOTALS	0	8	8	5	5	51	69	5	13	18	78	77	155	20	193	262	40



UCR Crimes by GeoArea

Required Parameters

Reporting Period: Jan 2025 to Sep 2025
Agency: OCEANSIDE

Optional Parameters

Geographical Area: All Beats
Group by: Agency Select by: Neighborhood

Prior Report Number: S1STA120

Neighborhood	ROBBERY--		--- AGGRVD		VIOLENT		-----BURGLARY-----			---LARCENY-THEFT---			M.VEH PROPERTY		CRIME	CAR	
	MURDER	RAPE	RAPE (HISTORICAL)	ARMED	ST/ ARM	ASSAULT	CRM TL	RESID	NRESID	TOTAL	\$400+	<\$400	TOTAL	THEFT	CRM TL	IDX TL	PROWL
Agency = OCEANSIDE																	
AIRPORT	0	2	2	0	-1	10	11	0	41	41	7	19	26	3	70	81	12
EASTSIDE/CAPISTRANO	0	2	0	1	1	26	30	8	7	15	20	27	47	6	68	98	28
FIRE MOUNTAIN	1	1	0	4	7	11	24	5	24	29	81	121	202	8	239	263	17
GUAJOME	0	3	3	0	0	19	22	5	4	9	49	40	89	6	104	126	26
IVEY RAN/RAN DEL ORO	0	7	4	1	3	26	37	13	21	34	59	76	135	31	200	237	54
IVY RAN/RAN DEL ORO	0	1	0	0	1	6	8	4	1	5	16	8	24	3	32	40	7
LAKE	0	2	1	4	3	19	28	4	12	16	33	58	91	3	110	138	16
MIRA COSTA	1	1	1	0	0	32	34	8	10	18	31	30	61	5	84	118	30
MISSN MESA/LOMA ALTA	1	3	2	4	5	23	36	10	21	31	57	67	124	13	168	204	62
MORRO HILLS	0	2	1	-1	0	7	8	3	3	6	6	12	18	0	24	32	7
NORTH VALLEY	0	2	1	3	1	20	26	4	1	5	25	33	58	9	72	98	21
OCEAN HILLS	0	1	1	1	1	4	7	1	0	1	21	16	37	1	39	46	14
OCEANA	0	0	0	0	0	3	3	1	4	5	7	12	19	3	27	30	2
SAN LUIS REY	1	4	4	2	4	33	44	15	29	44	62	96	158	21	223	267	54
SOUTH OCEANSIDE	0	6	4	1	3	17	27	6	5	11	31	37	68	10	89	116	35
TOWNSITE	0	8	7	6	12	98	124	22	36	58	124	112	236	39	333	457	70
TRI CITY	1	3	1	1	2	17	24	2	1	3	15	26	41	2	46	70	19
UNKNOWN	0	1	1	0	0	0	1	0	0	0	7	8	15	0	15	16	1
SUB-TOTAL	5	49	33	27	42	371	494	111	220	331	651	798	1,449	163	1,943	2,437	475
GRAND TOTALS	5	49	33	27	42	371	494	111	220	331	651	798	1,449	163	1,943	2,437	475