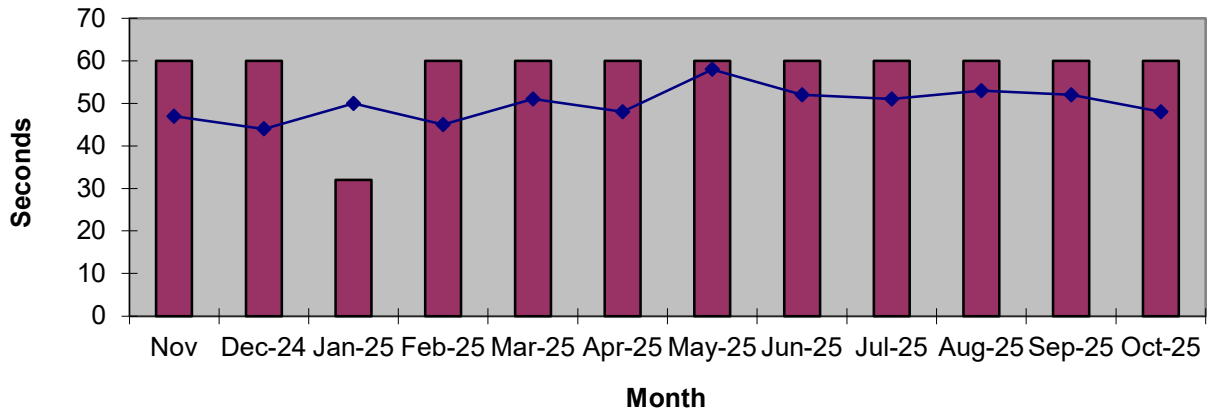
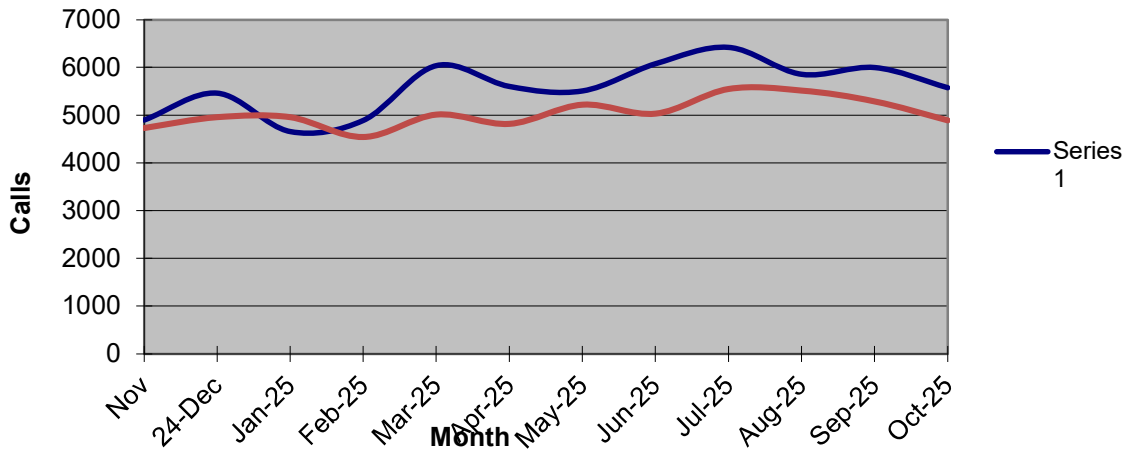


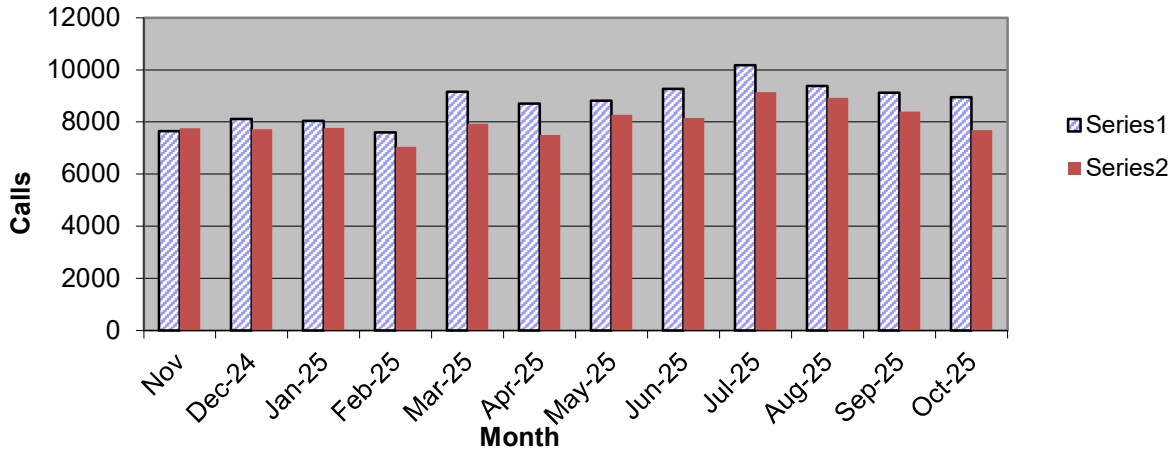
**Priority 1 Dispatch Times- Police**



**911 Calls**



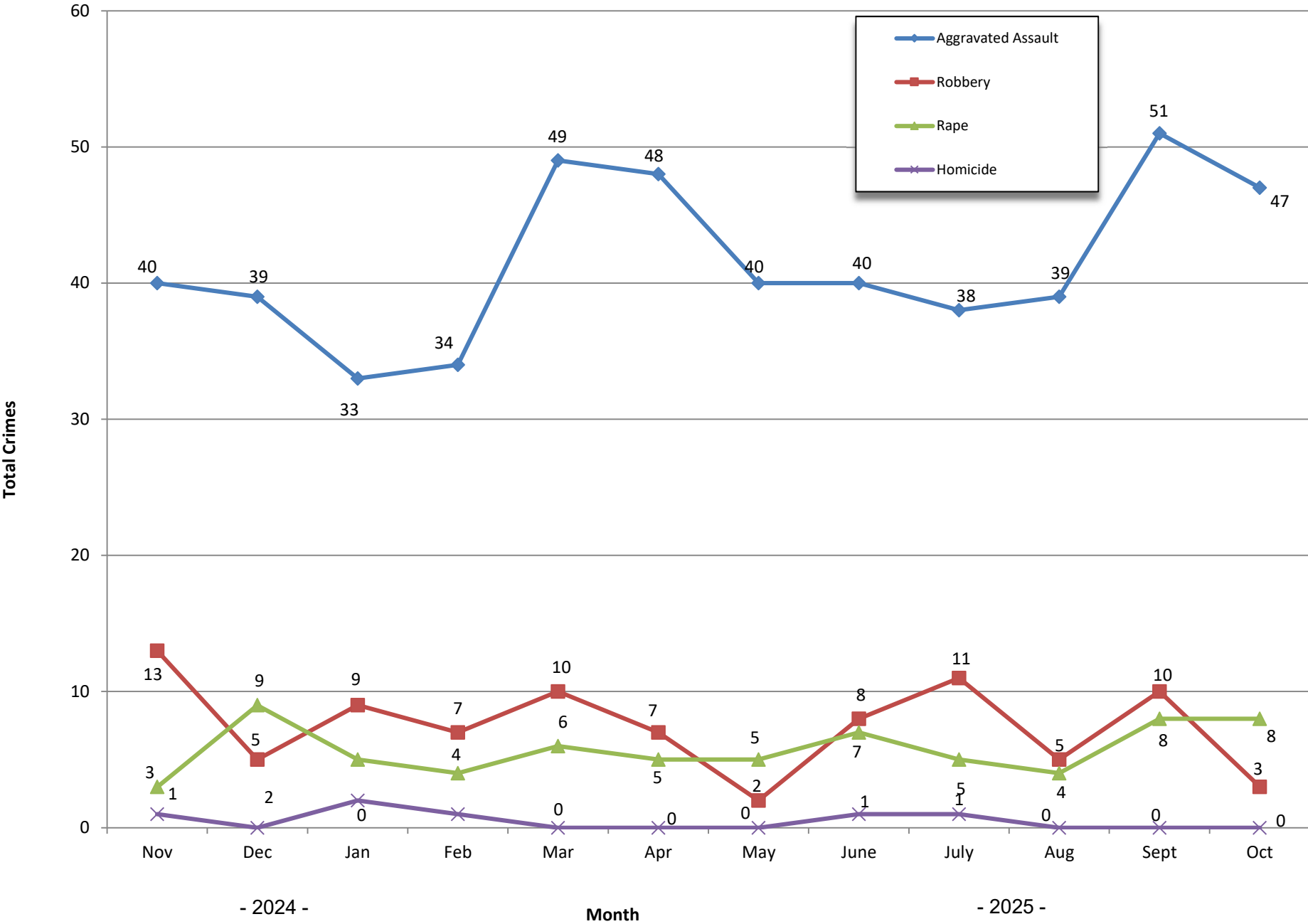
**Calls for Service**



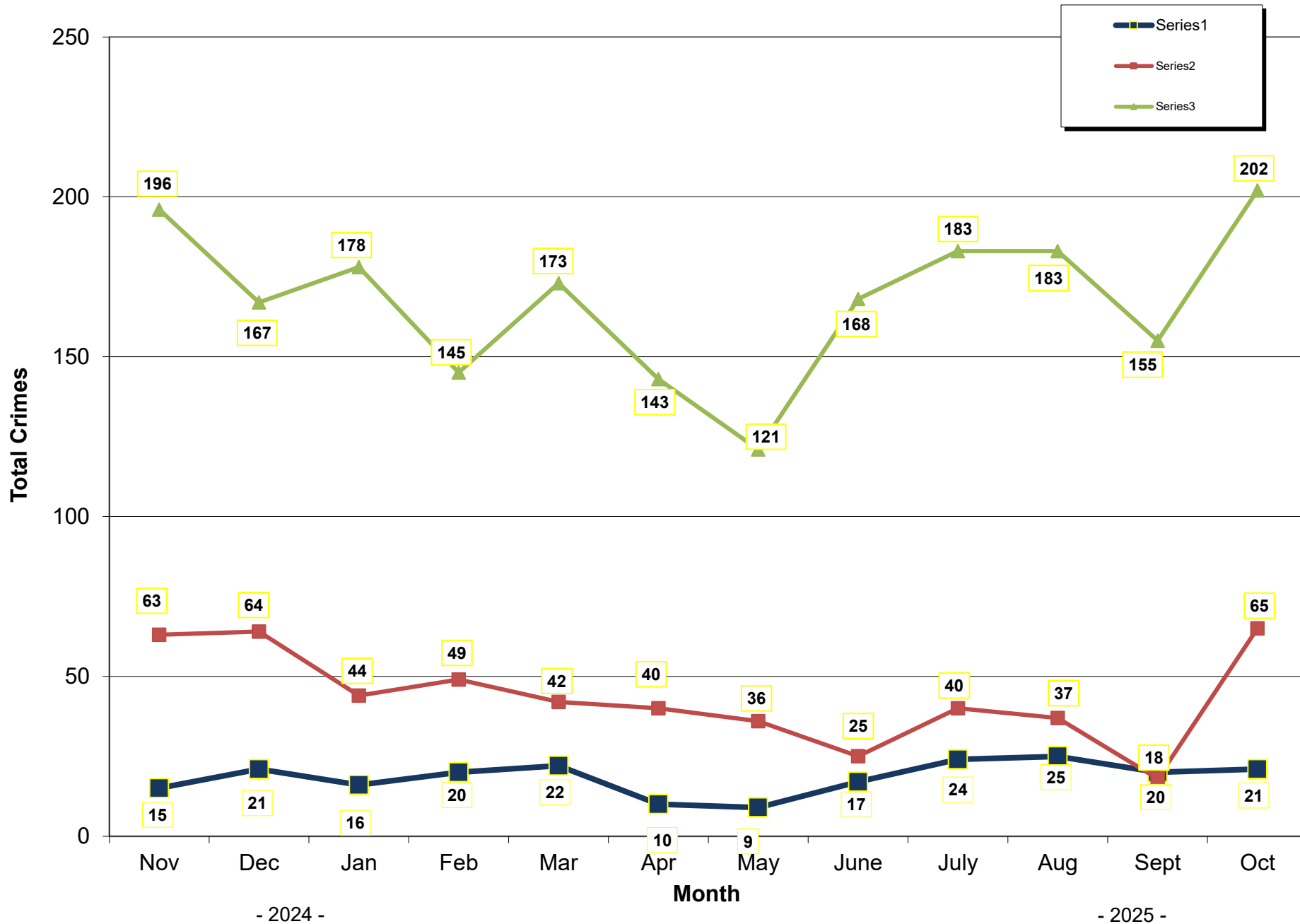
**OCEANSIDE POLICE DEPARTMENT  
FBI INDEX CRIMES**

		MONTHLY CASE ACTIVITY 2025											YEAR TO DATE COMPARISON				
		JAN	FEB	MAR	APR	MAY	JUN	JUL	AUG	SEP	OCT	NOV	DEC	2024	2025	CHANGE	% CHANGE
1. HOMICIDE	Actual	2	1	0	0	0	1	1	0	0	0			2	5	3	150.0%
	Cleared	1	0	0	1	0	1	0	0	0	0			1	3	2	200.0%
2. RAPE	Actual	5	4	6	6	5	7	5	4	8	8			58	58	0	0.0%
	Cleared	0	0	1	1	0	2	0	2	1	0			3	7	4	133.3%
3. ROBBERY	Actual	9	7	10	10	2	8	11	5	10	3			129	75	-54	-41.9%
	Cleared	2	4	3	3	2	2	3	5	4	1			52	29	-23	-44.2%
4. AGGR. ASSAULT	Actual	33	33	49	49	40	40	38	39	51	47			510	419	-91	-17.8%
	Cleared	13	19	24	24	26	12	22	20	24	23			207	207	0	0.0%
5. BURGLARY	Actual	44	49	42	42	36	25	40	37	18	65			383	398	15	3.9%
	Cleared	3	5	6	6	3	2	3	5	1	5			41	39	-2	-4.9%
6. LARCENY THEFT	Actual	178	145	173	173	121	168	183	183	155	202			1817	1681	-136	-7.5%
	Cleared	13	2	10	10	8	12	11	8	11	17			86	102	16	18.6%
7. AUTO THEFT	Actual	16	20	22	22	9	17	24	25	20	21			293	196	-97	-33.1%
	Cleared	1	1	3	3	0	0	1	2	0	0			18	11	-7	-38.9%
TOTAL INDEX CRIMES	Actual	287	259	302	302	213	266	302	292	331	346			3192	2900	-292	-9.1%
	Cleared	33	31	47	47	39	31	43	42	44	46			408	403	-5	-1.2%
TOTAL PERSON CRIMES	Actual	49	45	65	60	47	56	55	48	69	58			699	552	-147	-21.0%
	Cleared	16	23	28	23	28	17	28	27	29	24			263	243	-20	-7.6%
TOTAL PROPERTY CRIMES	Actual	238	214	195	193	166	210	247	245	193	346			2493	2247	-246	-9.9%
	Cleared	17	8	28	7	11	14	15	15	12	22			145	149	4	2.8%
ARSON	Actual	7	1	0	5	2	5	4	3	6	2			21	35	14	66.7%
Y-T-D Loss \$209,219	Cleared	4	1	0	2	1	1	0	1	2	1			10	13	3	30.0%

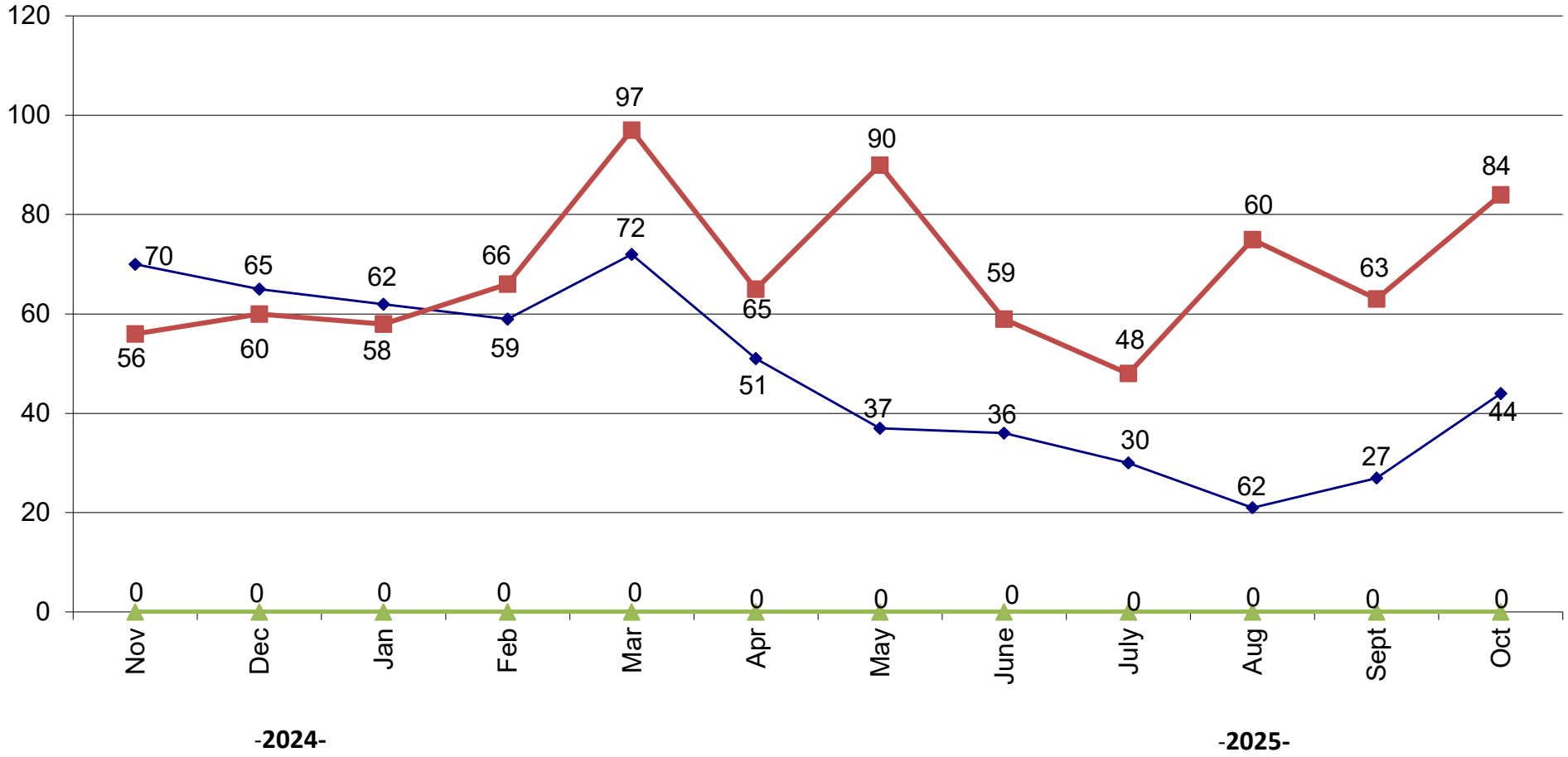
# Part 1 Crimes by Month (Violent Crimes) 2025



### Part 1 Crimes by Month (Property Crimes) 2025



# Traffic Collisions 2025





# UCR Crimes by GeoArea

## Required Parameters

Reporting Period: Oct 2025  
 Agency: OCEANSIDE

## Optional Parameters

Geographical Area: All Beats  
 Group by: Agency Select by: Neighborhood

Prior Report Number: S1STA120

Neighborhood	ROBBERY--		--- AGGRVD		VIOLENT		-----BURGLARY-----			---LARCENY-THEFT---			M.VEH PROPERTY		CRIME	CAR	
	MURDER	RAPE	RAPE (HISTORICAL)	ARMED	ST/ ARM	ASSAULT	CRM TL	RESID	NRESID	TOTAL	\$400+	<\$400	TOTAL	THEFT	CRM TL	IDX TL	PROWL
*****																	
<b>Agency = OCEANSIDE</b>																	
AIRPORT	0	0	0	0	0	1	1	0	5	5	2	0	2	-1	6	7	1
EASTSIDE/CAPISTRANO	0	0	0	0	0	3	3	1	0	1	4	6	10	1	12	15	6
FIRE MOUNTAIN	0	0	0	0	0	3	3	0	7	7	12	26	38	2	47	50	4
GUAJOME	0	0	0	0	0	1	1	9	2	11	5	6	11	1	23	24	5
IVEY RAN/RAN DEL ORO	0	1	1	0	0	5	6	4	7	11	5	6	11	1	23	29	3
IVY RAN/RAN DEL ORO	0	1	0	0	0	1	2	2	0	2	2	0	2	0	4	6	0
LAKE	0	1	1	0	0	0	1	0	0	0	6	5	11	0	11	12	0
MIRA COSTA	0	1	1	0	0	5	6	0	2	2	4	4	8	1	11	17	2
MISSN MESA/LOMA ALTA	0	1	1	0	0	2	3	4	0	4	15	11	26	2	32	35	8
MORRO HILLS	0	0	0	0	1	1	2	1	0	1	0	4	4	1	6	8	2
NORTH VALLEY	0	0	0	0	0	1	1	1	2	3	0	5	5	0	8	9	3
OCEAN HILLS	0	0	0	0	0	0	0	1	0	1	1	0	1	0	2	2	0
OCEANA	0	0	0	0	1	0	1	0	1	1	3	1	4	0	5	6	0
SAN LUIS REY	0	0	0	0	0	4	4	1	2	3	4	13	17	5	25	29	5
SOUTH OCEANSIDE	0	0	0	0	0	3	3	1	3	4	4	6	10	1	15	18	3
TOWNSITE	0	1	1	1	0	13	15	5	3	8	16	20	36	6	50	65	9
TRI CITY	0	2	1	0	0	4	6	0	1	1	3	3	6	1	8	14	2
UNKNOWN	0	0	0	0	0	0	0	0	0	0	0	0	0	0	0	0	0
<b>SUB-TOTAL</b>	<b>0</b>	<b>8</b>	<b>6</b>	<b>1</b>	<b>2</b>	<b>47</b>	<b>58</b>	<b>30</b>	<b>35</b>	<b>65</b>	<b>86</b>	<b>116</b>	<b>202</b>	<b>21</b>	<b>288</b>	<b>346</b>	<b>53</b>
<b>GRAND TOTALS</b>	<b>0</b>	<b>8</b>	<b>6</b>	<b>1</b>	<b>2</b>	<b>47</b>	<b>58</b>	<b>30</b>	<b>35</b>	<b>65</b>	<b>86</b>	<b>116</b>	<b>202</b>	<b>21</b>	<b>288</b>	<b>346</b>	<b>53</b>



# UCR Crimes by GeoArea

## Required Parameters

Reporting Period: Jan 2025 to Oct 2025  
Agency: OCEANSIDE

## Optional Parameters

Geographical Area: All Beats  
Group by: Agency Select by: Neighborhood

Prior Report Number: S1STA120

Neighborhood	ROBBERY--		--- AGGRVD		VIOLENT		-----BURGLARY-----			---LARCENY-THEFT---			M.VEH PROPERTY		CRIME		CAR
	MURDER	RAPE	RAPE (HISTORICAL)	ARMED	ST/ ARM	ASSAULT	CRM TL	RESID	NRESID	TOTAL	\$400+	<\$400	TOTAL	THEFT	CRM TL	IDX TL	PROWL
Agency = OCEANSIDE																	
AIRPORT	0	2	2	0	-1	11	12	0	46	46	9	19	28	2	76	88	13
EASTSIDE/CAPISTRANO	0	2	0	1	1	29	33	9	7	16	24	33	57	7	80	113	34
FIRE MOUNTAIN	1	1	0	4	7	14	27	5	31	36	93	147	240	10	286	313	21
GUAJOME	0	3	3	0	0	20	23	14	6	20	54	46	100	7	127	150	31
IVEY RAN/RAN DEL ORO	0	8	5	1	3	31	43	17	28	45	64	82	146	32	223	266	57
IVY RAN/RAN DEL ORO	0	2	0	0	1	7	10	6	1	7	18	8	26	3	36	46	7
LAKE	0	3	2	4	3	19	29	4	12	16	39	63	102	3	121	150	16
MIRA COSTA	1	2	2	0	0	37	40	8	12	20	35	34	69	6	95	135	32
MISSN MESA/LOMA ALTA	1	4	3	4	5	25	39	14	21	35	72	78	150	15	200	239	70
MORRO HILLS	0	2	1	-1	1	8	10	4	3	7	6	16	22	1	30	40	9
NORTH VALLEY	0	2	1	3	1	21	27	5	3	8	25	38	63	9	80	107	24
OCEAN HILLS	0	1	1	1	1	4	7	2	0	2	22	16	38	1	41	48	14
OCEANA	0	0	0	0	1	3	4	1	5	6	10	13	23	3	32	36	2
SAN LUIS REY	1	4	4	2	4	37	48	16	31	47	66	109	175	26	248	296	59
SOUTH OCEANSIDE	0	6	4	1	3	20	30	7	8	15	35	43	78	11	104	134	38
TOWNSITE	0	9	8	7	12	111	139	27	39	66	140	132	272	45	383	522	79
TRI CITY	1	5	2	1	2	21	30	2	2	4	18	29	47	3	54	84	21
UNKNOWN	0	1	1	0	0	0	1	0	0	0	7	8	15	0	15	16	1
<b>SUB-TOTAL</b>	<b>5</b>	<b>57</b>	<b>39</b>	<b>28</b>	<b>44</b>	<b>418</b>	<b>552</b>	<b>141</b>	<b>255</b>	<b>396</b>	<b>737</b>	<b>914</b>	<b>1,651</b>	<b>184</b>	<b>2,231</b>	<b>2,783</b>	<b>528</b>
<b>GRAND TOTALS</b>	<b>5</b>	<b>57</b>	<b>39</b>	<b>28</b>	<b>44</b>	<b>418</b>	<b>552</b>	<b>141</b>	<b>255</b>	<b>396</b>	<b>737</b>	<b>914</b>	<b>1,651</b>	<b>184</b>	<b>2,231</b>	<b>2,783</b>	<b>528</b>